

The Albany (Gibson)

1420 SQ FT

2333 Wonnacott Crescent SW



- 3 bedroom, 2.5 bath
- Spacious front veranda w/ composite deck w/ stone and metal railing
- Laminate floor in foyer, ½ bath, kitchen, dinette and great room
- Tile floor in rear entry and second floor bathrooms
- Quartz countertops in kitchen with undermount sink
- 36” upper cabinets w/ floor to ceiling cabinet pantry in kitchen
- Beautiful tile backsplash in kitchen
- LED pot lights and pendant lights in kitchen
- Pot and pan drawer
- Kitchen has Samsung stainless steel appliance package w/ white front load washer and dryer
- Hunter Douglas 1” aluminum blind package, with dustshield treatment
- Motion sensor light master bedroom walk-in closet
- Superior Silence shared wall system – no shared studs or floor joists
- Garage foundation poured full depth as basement
- Triple pane low E argon filled Energy Star rated windows
- Heat recovery ventilator, high efficiency furnace and hot water tank
- Premium siding color selection
- Front and rear landscaping
- 6’ x 8’ pressure treated wood deck with natural gas line for BBQ
- 20’ x 22’ rear concrete parking pad
- West facing backyard w/ lane access

Walker Lakes Aurora Showhome

2021 & 2023 Wonnacott Way SW, Edmonton

780.232.6084

cbeuerlein@bedrockhomes.ca

Job # WLK-0-034080 Lot 24, Block 22, Plan 162 4309

Notes:

bedrockhomes.ca

VISIT US AT ANY OF OUR SHOWHOMES!

Monday - Thursday 3-8pm, Weekends & Holidays 12-5PM



The Albany (Gibson)

1420 SQ FT

2333 Wonnacott Crescent SW



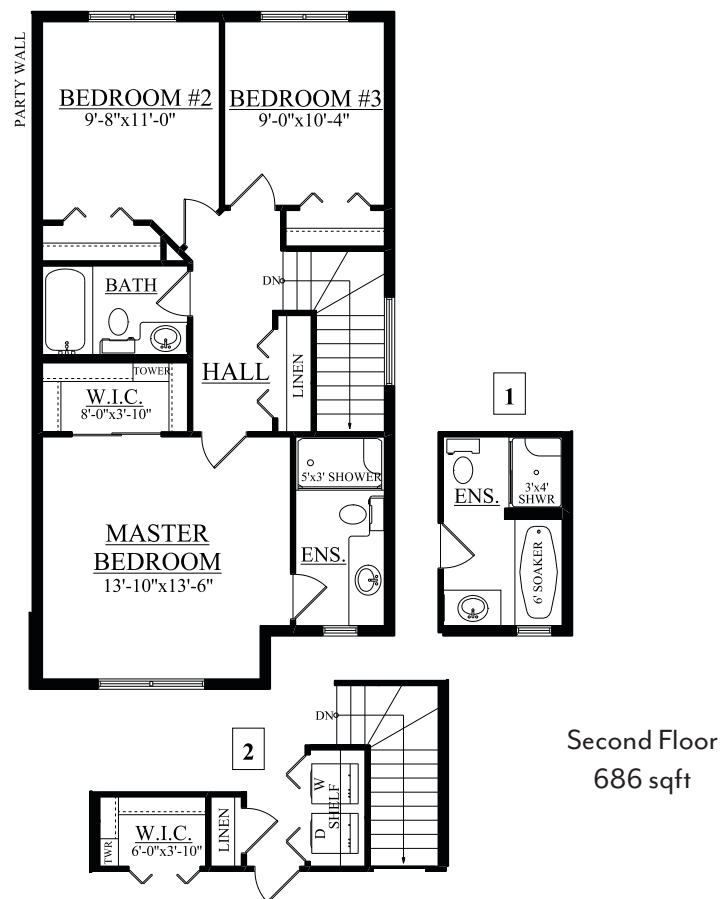
Walker Lakes Aurora Showhome

2021 & 2023 Wonnacott Way SW, Edmonton

780.232.6084

cbeuerlein@bedrockhomes.ca

Job # WLK-0-034080 Lot 24, Block 22, Plan 162 4309



bedrockhomes.ca

VISIT US AT ANY OF OUR SHOWHOMES!

Monday - Thursday 3-8pm, Weekends & Holidays 12-5PM

