

# The Oakley (Gibson)

1574 SQ FT

2335 Wonnacott Crescent SW



This home features a loft on the second floor, an open concept kitchen which opens up into the spacious great room. Kitchen features an island with white quartz countertops. The Kitchen includes pot lights and pendant lights, stainless steel appliance package. Other features include: front load washer and dryer, front and back landscape, rear deck and Hunter Douglas Blinds. Larger master bedroom has ensuite which includes a full shower and a spacious walk in closet. This home includes upgraded siding to a premium color and a double garage door.

- Stainless steel appliances
- Front loading washer and dryer
- Upgraded premium and modern package
- Quartz countertop and backsplash in the kitchen
- Loft on the second floor
- Island in the kitchen
- Front and back landscape
- Rear deck
- Hunter Douglas blinds
- Master bedroom features a large walk in closet
- Ensuite attached to master bedroom with a large standup shower
- Upgraded premium color siding
- Stone added to front post and garage
- South West facing Front on a 286.76 sq meter lot
- Railing on the main floor

## Walker Lakes Aurora Showhome

2021 Wonnacott Way SW, Edmonton

587.520.0935

aurorasales@bedrockhomes.ca

Job # WLK-0-034079 Lot 23, Block 22, Plan 162 4309

### Notes:

---

---

---

---

---

---

**bedrockhomes.ca**

VISIT US AT ANY OF OUR SHOWHOMES!

Monday - Thursday 3-8pm, Weekends & Holidays 12-5PM



# The Oakley (Gibson)

1574 SQ FT

2335 Wonnacott Crescent SW



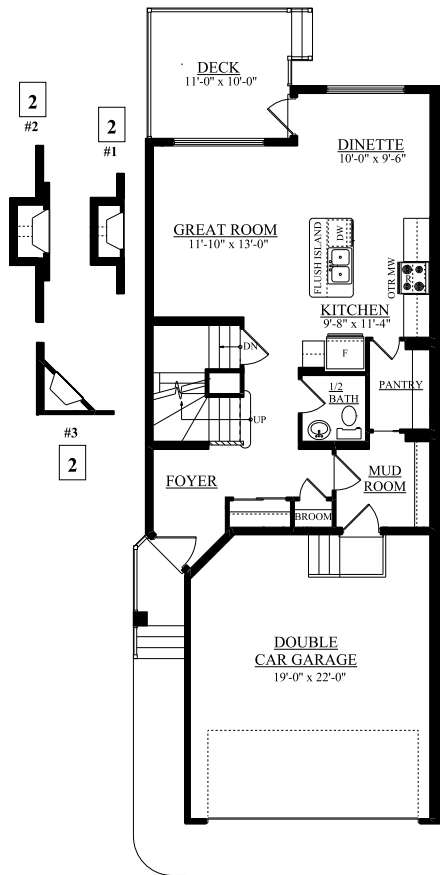
## Walker Lakes Aurora Showhome

2021 Wonnacott Way SW, Edmonton

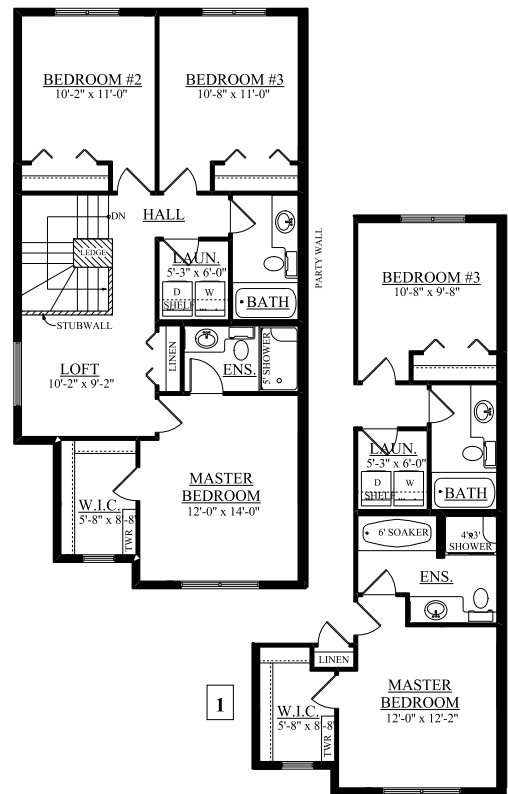
587.520.0935

aurorasales@bedrockhomes.ca

Job # WLK-0-034079 Lot 23, Block 22, Plan 162 4309



Main Floor  
715 sqft



Second Floor  
859 sqft

bedrockhomes.ca

VISIT US AT ANY OF OUR SHOWHOMES!

Monday - Thursday 3-8pm, Weekends & Holidays 12-5PM

