

Harris Sierra

1228 SQ FT

2323 Wonnacott Crescent SW



- 3 bedrooms, 2.5 bath
- Loft on the second floor
- Luxury Vinyl plank floor on main and bathrooms
- Pot and pan drawer.
- Kitchen has Samsung stainless steel appliance package w/ white front load washer and dryer
- Linear Electric Fireplace includes backing, electrical and electrical and recessed HDMI box for easy mounting of TV.
- Corner Pantry with wire shelving
- Paint grade railing with straight metal spindles on main and second floor.
- Triple pane low E argon filled Energy Star rated windows.
- Heat recovery Ventilator, high efficiency furnace and hot water tank
- Premium siding color selection.

Aurora Showhome

2021 Wonnacott Way SW, Edmonton

780.758.6707

aurora@bedrockhomes.ca

Job # WKR-0-034075 Lot 19, Block 22, Plan 162- 4309

Notes:

bedrockhomes.ca

VISIT US AT ANY OF OUR SHOWHOMES!

Monday - Thursday 3-8pm, Weekends & Holidays 12-5PM



Harris Sierra

1228 SQ FT

2323 Wonnacott Crescent SW



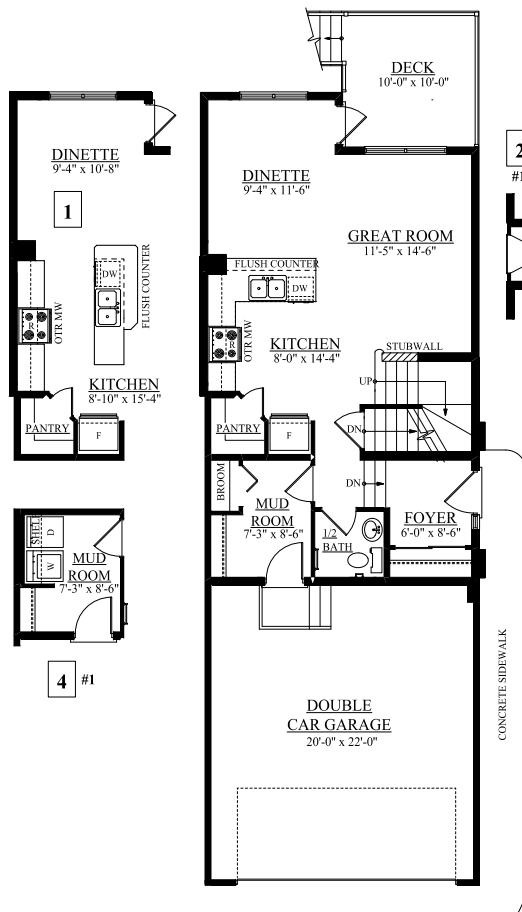
Aurora Showhome

2021 Wonnacott Way SW, Edmonton

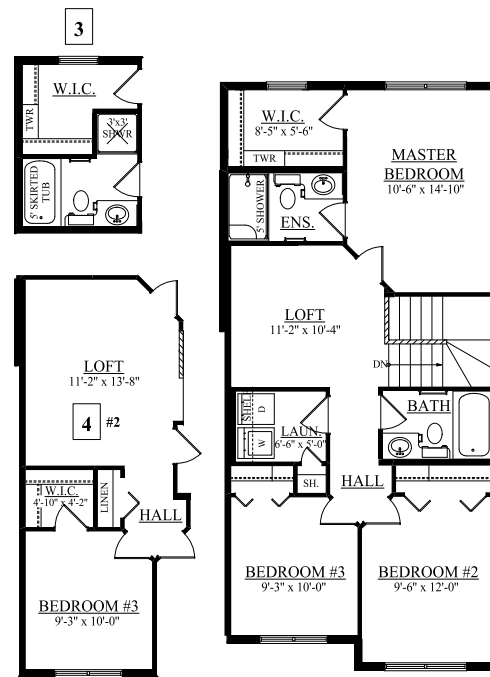
780.758.6707

aurora@bedrockhomes.ca

Job # WKR-0-034075 Lot 19, Block 22, Plan 162- 4309



Main Floor
683 sqft



Second Floor
789 sqft

bedrockhomes.ca

VISIT US AT ANY OF OUR SHOWHOMES!

Monday - Thursday 3-8pm, Weekends & Holidays 12-5PM

