



BEDROCK
HOMES

RYLEE B

2025 SQ FT
207 Larch Crescent



WOODBEND SHOWHOME

143 Larch Crescent, Leduc
780-612-5455
woodbend@bedrockhomes.ca

Job #WDB-0-035274
Lot 47, Block 1, Plan 212-1453

DETAILS

- Our Rylee model is a gorgeous home that includes 3 bedrooms, 2.5 bathrooms, second floor bonus room, walk through pantry and more!
- Modern, contemporary low maintenance kitchen featuring light grey upper cabinets to ceiling, white tiled backsplash, pot & pan drawers and undermounted sink set in grey quartz.
- Open concept main floor with a huge island offering ample seating and prep space for your home chef!
- Upstairs you'll find a spacious central bonus area creating added privacy between the primary suite and secondary bedrooms.
- Front facing primary bedroom with large walk in closet, and private four-piece ensuite.
- Enjoy the 4 piece ensuite with its free standing tub, separate shower, double sinks undermounted in quartz countertops, and private water closet.
- Secondary bedrooms are at the back of the home allowing more privacy between them and the primary suite.
- 6 piece Samsung appliance package.
- This home would not be complete without front attached double car garage.

RYLEE B

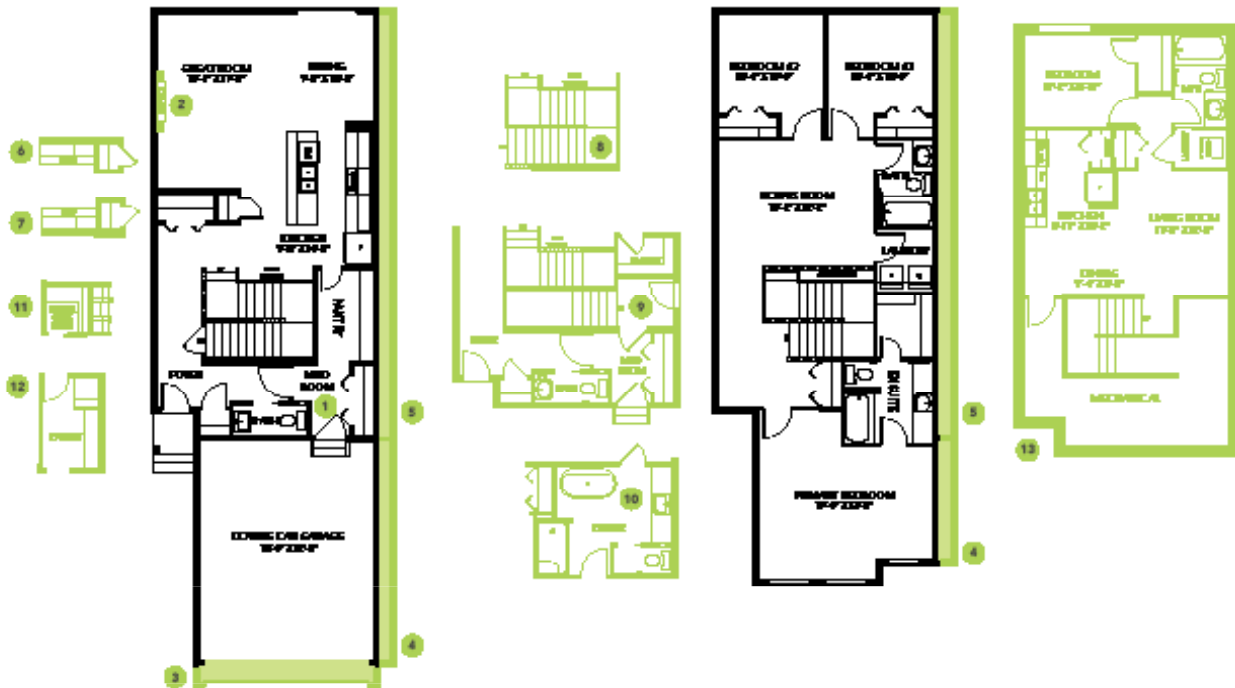
2025 SQ FT
207 Larch Crescent



SHOWHOME

143 Larch Crescent, Leduc
780-612-5455
woodbend@bedrockhomes.ca

Job #WDB-0-035274
Lot 47, Block 1, Plan 212-1453



Main Floor
992 SQ FT

Second Floor
1103 SQ FT

RYLEE B