



BEDROCK
HOMES

SASHA K

1564 SQ FT
296 Balsam Link



WOODBEND SHOWHOME

143 Larch Crescent, Leduc
780-612-5455
woodbend@bedrockhomes.ca

Job # WDB-0-035183
Lot 32, Block 3, Plan 172-3299

DETAILS

- Our Sasha model is a beautiful open concept laned home that includes a large front foyer, rear mudroom allowing loads of storage and comfort no matter how you enter the home.
- This home is filled with stunning interior selections, light grey ceiling height cabinets, pot & pan drawers, white tile backsplash and grey quartz countertops with double undermounted sink and a huge island. These selections are carried throughout the home.
- Upstairs you'll find a central bonus room between the primary suite and secondary bedrooms which gives added privacy.
- Good sized primary bedroom at the front of the home. Enjoy the lovely ensuite with dual undermounted sinks and quartz countertops, along with a large walk in closet off of the ensuite.
- Secondary bedrooms are located at the back of the home with big windows, one of the bedrooms has a walk in closet as well.
- Laundry is on the second floor making everyone's lives easier.
- Our homes come with a six piece Samsung appliance package.
- This home would not be complete without a 20'x22' parking pad including electrical roughins perfect for a future oversized double garage!

SASHA K

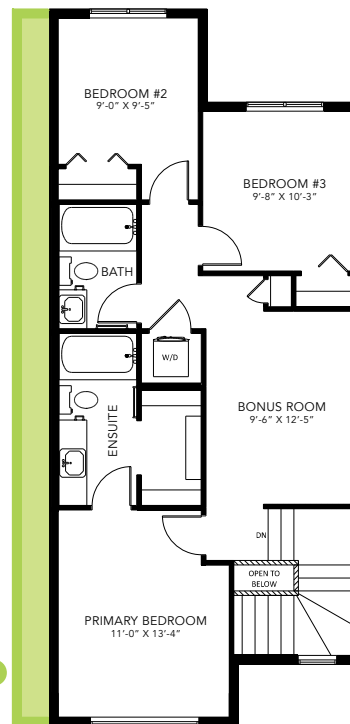
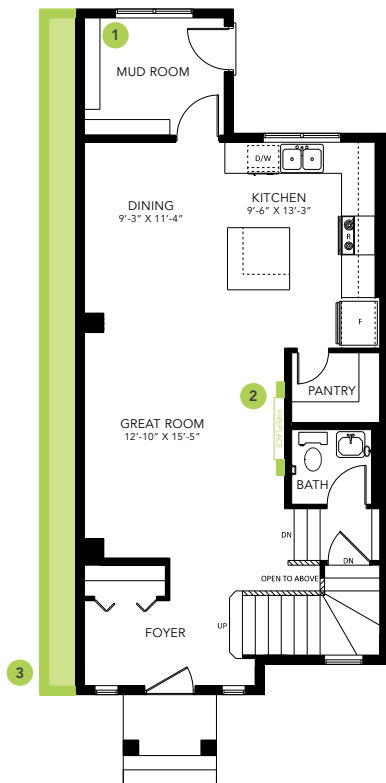
1564 SQ FT
296 Balsam Link



WOODBEND SHOWHOME

143 Larch Crescent, Leduc
780-612-5455
woodbend@bedrockhomes.ca

Job # WDB-0-035183
Lot 32, Block 3, Plan 172-3299



SASHA K