



BEDROCK
HOMES

DAYA B

1501 SQ FT
294 Balsam Link



WOODBEND SHOWHOME

143 Larch Crescent, Leduc
780-612-5455
woodbend@bedrockhomes.ca

Job # WDB-0-035182
Lot 31, Block 3, Plan 172-3299

DETAILS

- Our Daya model is a beautiful open concept laned home which includes a large front foyer and rear mudroom allowing loads of storage and comfort no matter how you enter the home.
- This home has a great designer kitchen, with navy blue coloured ceiling height cabinets, pot & pan drawers, a long central island with an eating bar, double undermounted sink in white quartz and huge walk in pantry.
- Main floor flex room with a large window allowing tons of natural light in.
- Good sized primary bedroom at the back of the home. Enjoy the lovely ensuite with dual undermounted sinks and quartz countertops. Along with a large walk in closet off of the ensuite.
- Secondary bedrooms are located at the front of the home with large windows.
- Laundry is on the second floor making everyone's lives easier.
- Our homes comes with six piece Samsung appliance package and Brilliant smart home system.
- This home would not be complete without a 20'x22' parking pad including electrical roughins perfect for a future oversized double garage!

DAYA B

DAYA B

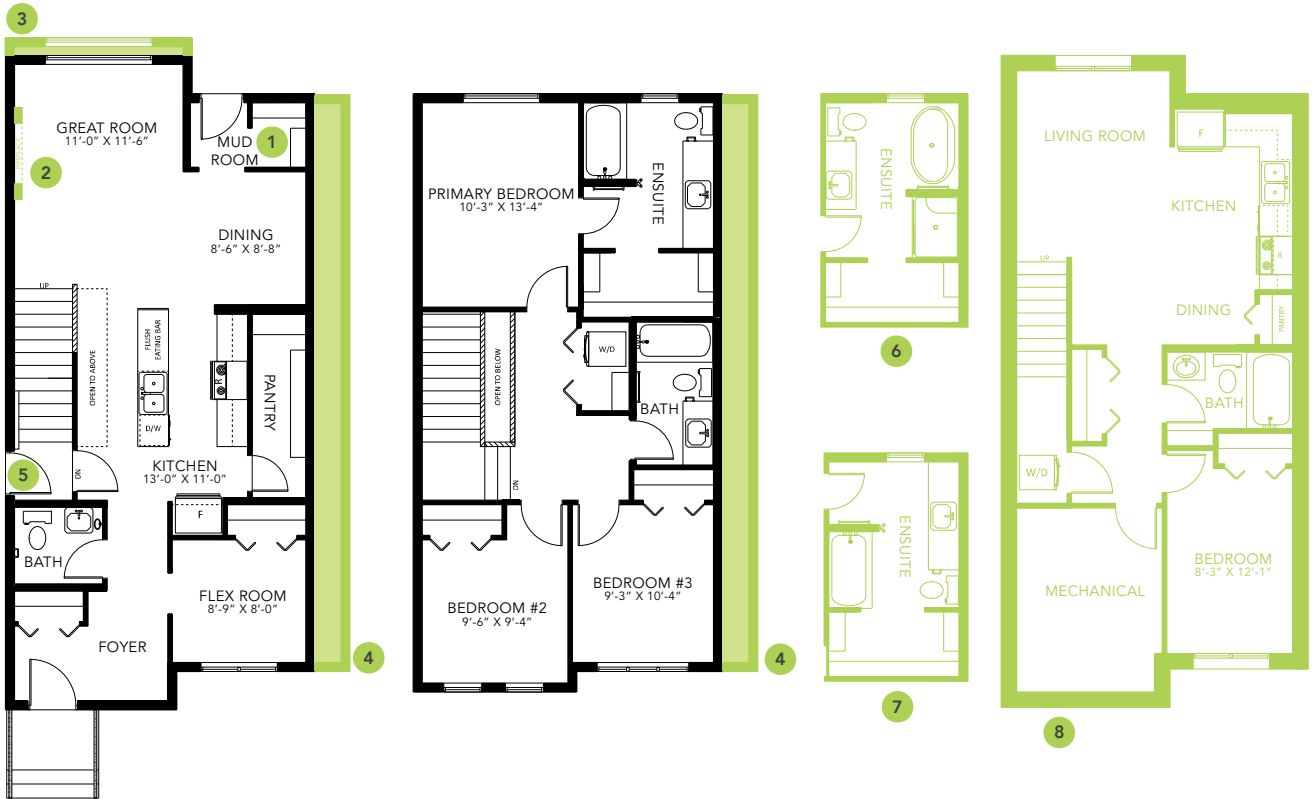
1501 SQ FT
294 Balsam Link



WOODBEND SHOWHOME

143 Larch Crescent, Leduc
780-612-5455
woodbend@bedrockhomes.ca

Job # WDB-0-035182
Lot 31, Block 3, Plan 172-3299



Main Floor
808 SQ FT

Second Floor
685 SQ FT