



BEDROCK
HOMES

DAYA P

1493 SQ FT
288 Balsam Link



WOODBEND SHOWHOME

143 Larch Crescent, Leduc
780-612-5455
woodbend@bedrockhomes.ca

Job # WDB-0-035179
Lot 28, Block 3, Plan TBA

DETAILS

- Our Daya model is beautiful, open concept laned home which includes a large front foyer and rear mudroom allowing loads of storage and comfort no matter how you enter the home.
- This home has a great designer kitchen, with ceiling height cabinets, pots & pan drawer and a long central island with an eating bar. Fall in love with the stunning white quartz countertops, grey backsplash and sleek navy blue cabinets.
- Huge walk in pantry with a ton of storage.
- Main floor flex room with a large window allowing tons of natural light in.
- Our homes comes with six piece Samsung appliance package and Brilliant smart home system.
- Good sized primary bedroom at the back of the home. Enjoy the lovely ensuite with dual undermounted sinks and quartz countertops. Along with a large walk in closet off the ensuite.
- Secondary bedrooms are located at the front of the home with large windows.
- Laundry is on the second floor making everyone's lives easier.
- This home would not be complete without a 20'x22' parking pad, perfect for a future oversized double garage!

DAYA P



BEDROCK
HOMES

DAYA P

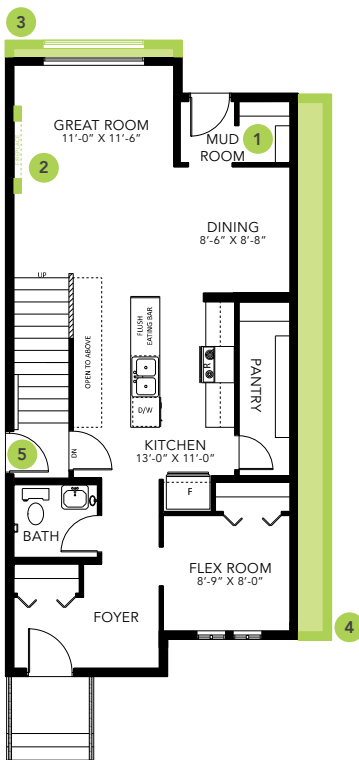
1493 SQ FT
288 Balsam Link



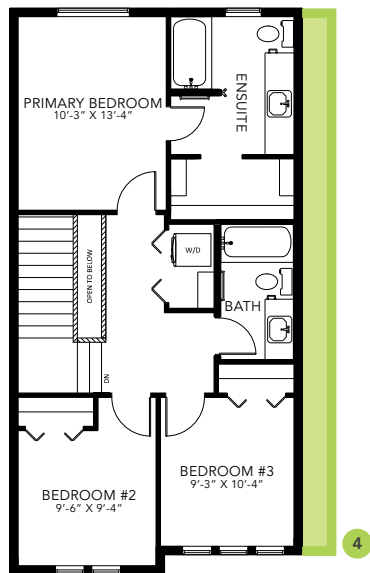
WOODBEND SHOWHOME

143 Larch Crescent, Leduc
780-612-5455
woodbend@bedrockhomes.ca

Job # WDB-0-035179
Lot 28, Block 3, Plan TBA



Main Floor
808 SQ FT



Second Floor
685 SQ FT

DAYA P