



BEDROCK
HOMES

RUBY H

1928 SQ FT
199 Larch Crescent



WOODBEND SHOWHOME

143 Larch Crescent, Leduc
780-612-5455
woodbend@bedrockhomes.ca

Job # WDB0-0-04932
Lot 51, Block 1, Plan 212-1453

DETAILS

- Our Ruby model is a double front attached garage home with 9' ceilings on the main floor, 3 bedrooms, bonus room and 2.5 bathrooms.
- This home is filled with stunning interior selections, light grey cabinets, dark grey quartz with a white tiled backsplash. These beautiful selections are carried throughout the home.
- Great room and dinette share an open area for easy flow between them and the kitchen. Creating a lovely space for family and friends.
- Upstairs you'll find secondary rooms at the front of the house, a central bonus area, and a large primary suite at the back of the house.
- Your large primary bedroom includes a three-piece ensuite with a water closet. Walk through the ensuite to the walk-in closet that leads directly into your convenient upstairs laundry room.
- Included Brilliant Smart Home package. Control lights, front door lock, garage door and thermostat all on the panel or a convenient phone app as well as a 6 piece Samsung appliance package.
- This home would not be complete without a 20'x 24' garage and 8 foot door which makes this the perfect oversized double garage!

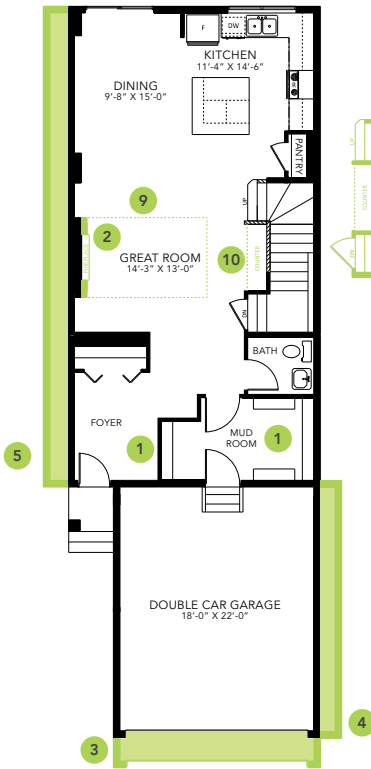
RUBY H



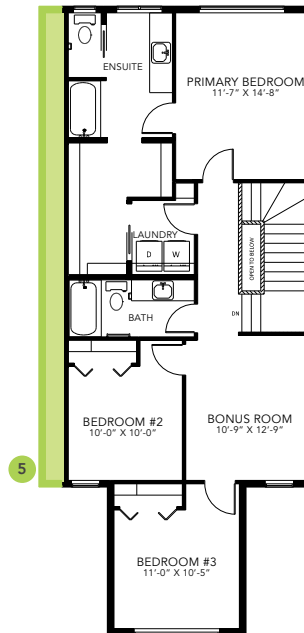
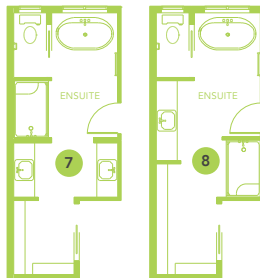
WOODBEND SHOWHOME

143 Larch Crescent, Leduc
780-612-5455
woodbend@bedrockhomes.ca

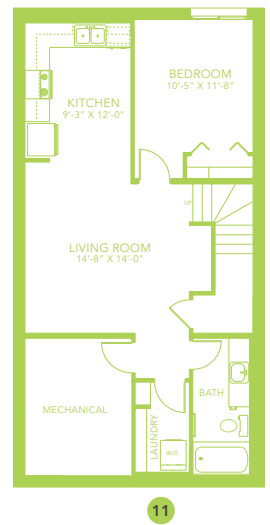
Job # WDB0-0-04932
Lot 51, Block 1, Plan 212-1453



Main Floor
924 SQ FT



Second Floor
1004 SQ FT



RUBY H