



**BEDROCK**  
HOMES

# JULIA K

1753 SQ FT  
165 Larch Crescent



## WOODBEND SHOWHOME

143 Larch Crescent, Leduc  
780-612-5455  
woodbend@bedrockhomes.ca

Job #WDB-0-04927  
Lot 68, Block 1, Plan 212-1453

## DETAILS

- Our Julia model home features 3 bedrooms, 2.5 bathrooms and a spacious bonus room. The open floor plan and sophisticated finishes are what dream homes are made of.
- This home is filled with stunning interior selections, dark blue cabinets, white quartz, and a light grey tile backsplash. These beautiful selections are carried throughout the home.
- Designer kitchen with quartz countertops, under-mounted sink, pot & pan drawers and ceiling height cabinets that lead to a walkthrough pantry and mudroom that is conveniently right off the garage.
- Great room and dinette share an open area for easy flow between them and the kitchen. Creating a lovely space for family and friends.
- Upstairs you'll find secondary rooms at the back of the house, a central bonus area for added privacy, and a large primary suite at the front of the house. Your primary bedroom includes a three piece ensuite and a walk-in closet.
- Second floor laundry is also a great feature that is convenient for everyone!
- This home would not be complete without front attached double car garage.
- 6-piece Samsung stainless steel appliance package.

BUILT TO LAST \ \ **BEDROCKHOMES.CA**

SPEC 2022 - Bedrock Homes Ltd. reserves the right to modify floorplans, renderings, elevations and features in a continuing effort to improve product quality. Floorplans, specifications & prices are subject to change without notice. Errors & omissions exempt.

# JULIA K

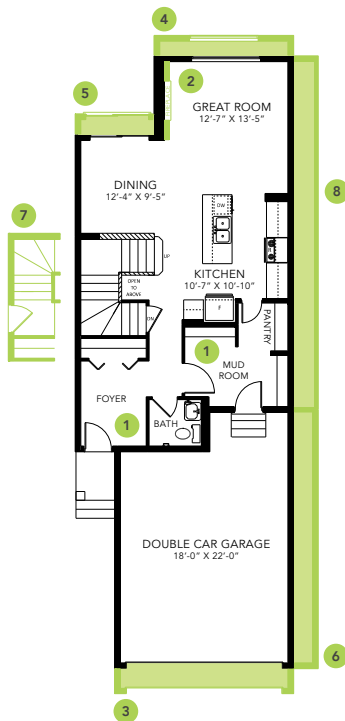
1753 SQ FT  
165 Larch Crescent



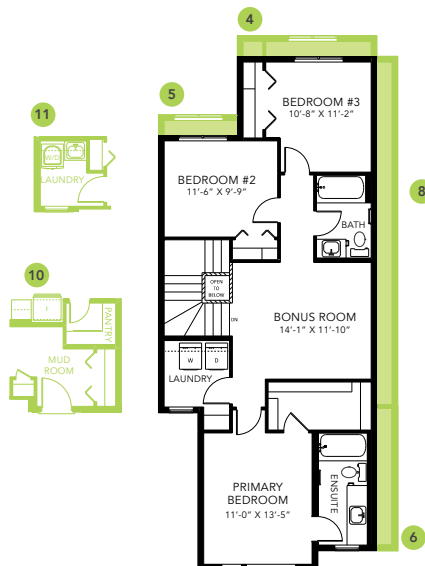
## SHOWHOME

143 Larch Crescent, Leduc  
780-612-5455  
woodbend@bedrockhomes.ca

Job #WDB-0-04927  
Lot 68, Block 1, Plan 212-1453



**Main Floor**  
798 SQ FT



**Second Floor**  
955 SQ FT



JULIA K