

Cascade
1605 SQ FT
324 Balsam Link



- 3 bedroom, 2.5 bathroom
- 9' Ceilings on main floor
- 6 piece stainless steel Samsung appliance package included
- Upgraded kitchen cabinets and backsplash
- Linear electric fireplace
- 4 Piece ensuite with dual vanity
- Spacious walk-in closet
- Upper laundry room
- Quartz counter tops throughout
- 20' x 22' rear parking pad
- Triple Pane Low-E Argon filled Energy Star rated windows

Woodbend Showhome

303 Balsam Link, Edmonton

780.612.5455

woodbend@bedrockhomes.ca

Job # WDB-4323 Lot 46, Block 3, Plan 172-2010

Notes:

bedrockhomes.ca

VISIT US AT ANY OF OUR SHOWHOMES!

Monday - Thursday 3-8pm, Weekends & Holidays 12-5PM

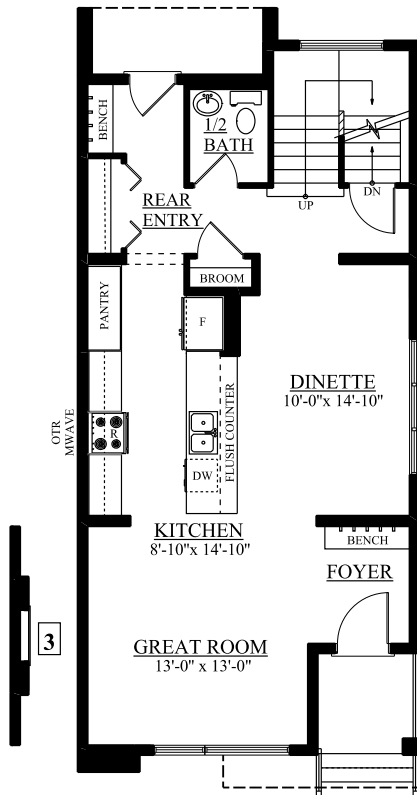


Cascade
 1605 SQ FT
 324 Balsam Link

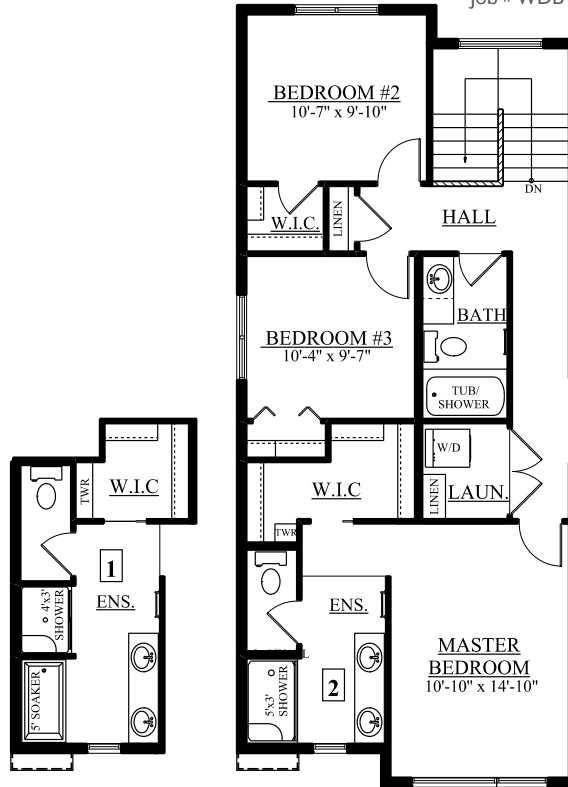


Woodbend Showhome
 303 Balsam Link, Edmonton
 780.612.5455
 woodbend@bedrockhomes.ca

Job # WDB-4323 Lot 46, Block 3, Plan 172-2010



Main Floor
 782 sqft



Second Floor
 823 sqft

bedrockhomes.ca

VISIT US AT ANY OF OUR SHOWHOMES!
 Monday - Thursday 3-8pm, Weekends & Holidays 12-5PM

