

# The Wayde (Ashbury)

1401 SQ FT

5545 Schonsee Drive NW



- Beautiful 3 bedroom, 2 ½ bath duplex with single car garage
- Welcoming curb appeal with the use of multiple texture, color and stone accents
- Laminate floors throughout the main floor
- Tile floors in the upstairs bathrooms, upper laundry and mud room
- Stunning quartz countertops with upgraded tile backsplash finish the kitchen
- Undermount stainless steel sink in kitchen with spray faucet
- Massive island with plenty of room for eating, cooking and socializing
- Pot and pan drawers and large 36" cabinet pantry offer plenty of storage in the kitchen
- Master bedroom has large walk-in closet and ensuite w/ 5' walk-in shower featuring tiled walls to ceiling
- Laundry conveniently located on the second floor
- 96% Hi-efficiency furnace and power vent 40 gallon hot water tank
- Smoke detectors on each floor and in every bedroom
- Fully ducted active HRV – Heat Recovery Ventilation System
- Triple pane windows
- Basement roughed-in for future 3 pc bathroom
- Two basement windows offer plenty of natural light
- Two garage door openers
- Fully covered by The Alberta New Home Warranty Program

## Schonsee Showhome

5525 & 5527 Schonsee Drive NW, Edmonton, AB.

P. 780.457.1956

[dhirsch@bedrockhomes.ca](mailto:dhirsch@bedrockhomes.ca)

Job # SCH-0-034338 Lot 78, Block 4, Plan 152 5206

Notes:

---

---

---

---

---

---

[bedrockhomes.ca](http://bedrockhomes.ca)

VISIT US AT ANY OF OUR SHOWHOMES!

Monday - Thursday 3-8pm, Weekends & Holidays 12-5PM



# The Wayde (Ashbury)

1401 SQ FT

5545 Schonsee Drive NW



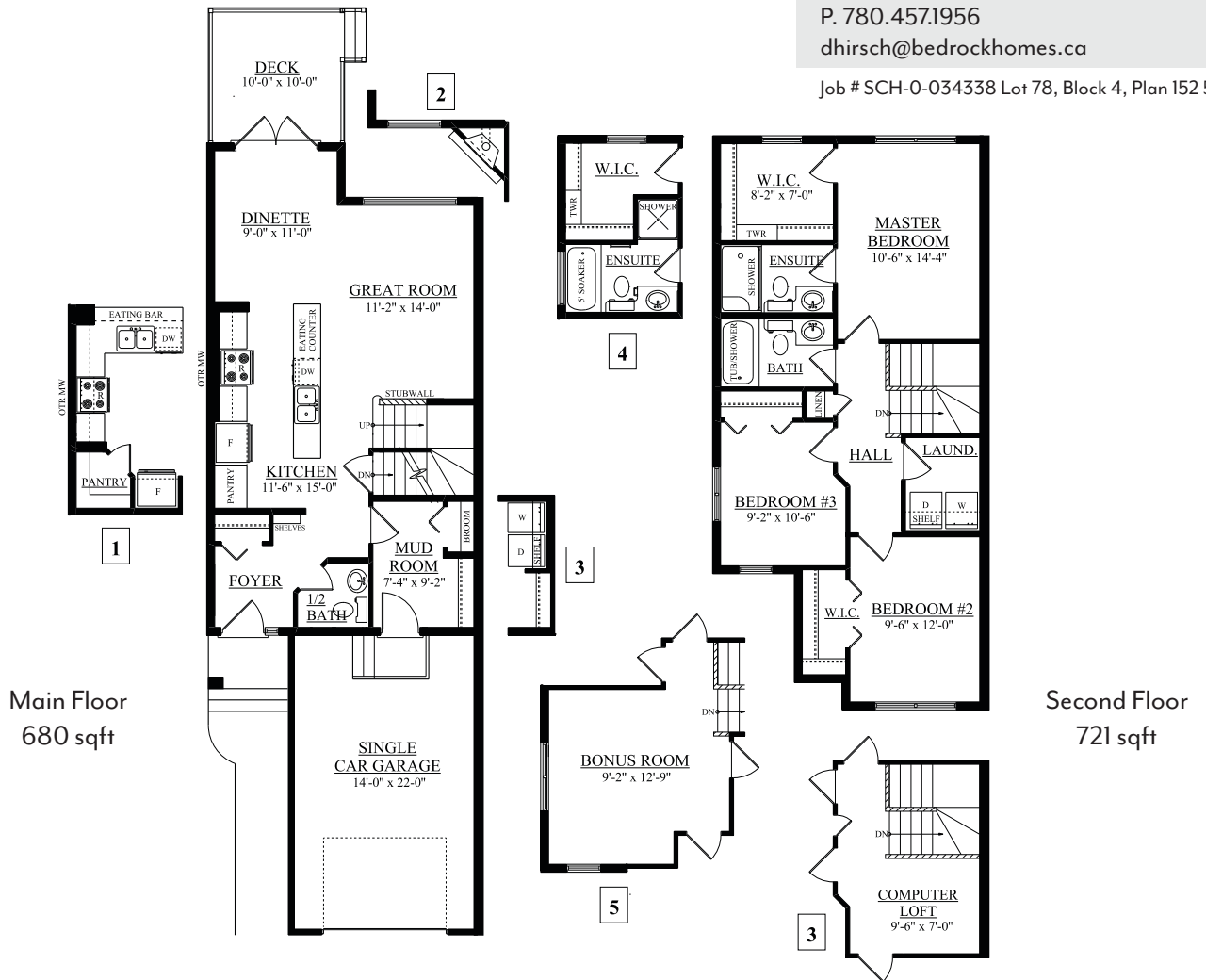
## Schonsee Showhome

5525 & 5527 Schonsee Drive NW, Edmonton, AB.

P. 780.457.1956

dhirsch@bedrockhomes.ca

Job # SCH-0-034338 Lot 78, Block 4, Plan 152 5206



[bedrockhomes.ca](http://bedrockhomes.ca)

VISIT US AT ANY OF OUR SHOWHOMES!

Monday - Thursday 3-8pm, Weekends & Holidays 12-5PM

