

The Layton (Aspen)

1555 SQ FT

17315-78 St. NW

Schonsee



- Beautiful 3 Bedroom, 2 ½ Bath Duplex with Double Car Garage
- Welcoming Curb Appeal with the Use of Multiple Texture, Color and Stone Accents
- Engineered Hardwood Floors Throughout the Main Floor
- Upgraded Lighting Package
- Tile Floors in the Second Floor Baths, and Mud Room
- Stunning Quartz Countertops w/Backsplash Finish the Kitchen
- Double Undermount Stainless Steel Sinks with Spray Faucet
- Massive Island with Plenty of Room for Eating, Cooking and Socializing
- Pot and Pan Drawers and Large 36” Cabinet Pantry offer Plenty of Storage in the Kitchen
- Main Floor Den With French Doors
- Main Floor Railing w/ Metal Spindles
- Master Bedroom Has Large Walk-In Closet and Ensuite w/ 5’ Walk-In Shower
- 40 Gallon Hot Water Tank
- Smoke Detectors on Each Floor and In Every Bedroom
- Fully Ducted Active HRV – Heat Recovery Ventilation System
- Triple Pane Windows
- Basement Roughed-In for Future 3 Pc Bathroom
- Two Garage Door Openers

Schonsee Showhome

17104 + 17108 75 St. NW, Edmonton AB

P. 780.457.1956

schonseesales@bedrockhomes.ca

Job # SCH-0-034186 Lot 61, Block 4, Plan 152 5206

Notes:

bedrockhomes.ca

VISIT US AT ANY OF OUR SHOWHOMES!

Monday - Thursday 3-8pm, Weekends & Holidays 12-5PM

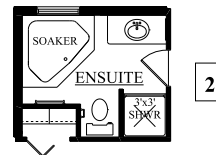
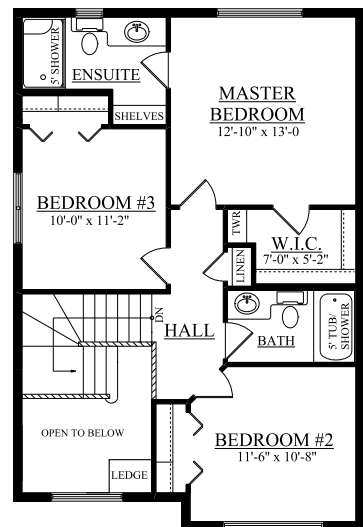
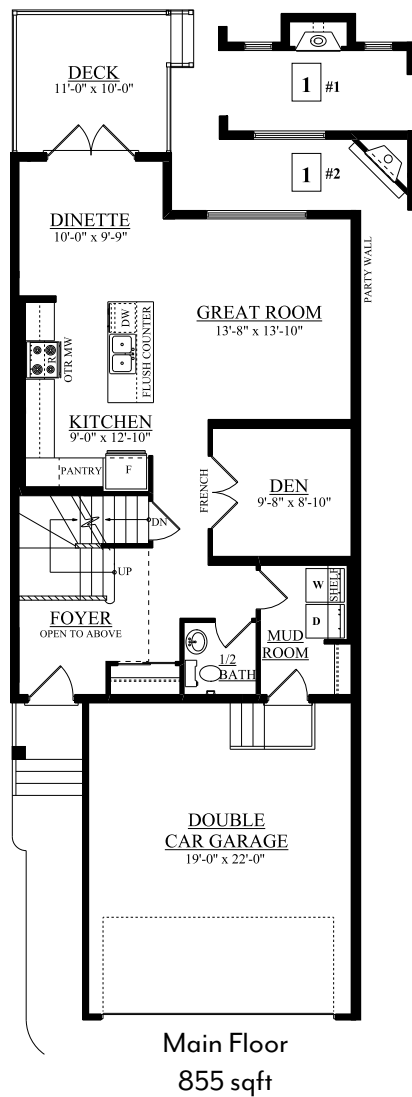


The Layton (Aspen)

1555 SQ FT

17315-78 St. NW

Schonsee



Schonsee Showhome

17104 + 17108 75 St. NW, Edmonton AB

P. 780.457.1956

schonseesales@bedrockhomes.ca

Job # SCH-0-034186 Lot 61, Block 4, Plan 152 5206

bedrockhomes.ca

VISIT US AT ANY OF OUR SHOWHOMES!

Monday - Thursday 3-8pm, Weekends & Holidays 12-5PM

