

## The Kent (Ashbury)

1401 SQ FT

17304-81 St. NW

Schonsee



- Beautiful 3 Bedroom, 2 ½ Bath Duplex with Single Car Garage
- Welcoming Curb Appeal with the Use of Multiple Texture, Color and Stone Accents
- Laminate Floors Throughout the Main Floor
- Tile Floors in the Second Floor Baths, and Mud Room
- Stunning Quartz Countertops w/Backsplash Finish the Kitchen
- Double Undermount Stainless Steel Sinks with Spray Faucet
- Massive Island with Plenty of Room for Eating, Cooking and Socializing
- Pot and Pan Drawers and Large 36" Cabinet Pantry offer Plenty of Storage in the Kitchen
- Master Bedroom Has Large Walk-In Closet and Ensuite w/ 5' Walk-In Shower
- Laundry Conveniently Located on the Second Floor
- 40 Gallon Hot Water Tank
- Smoke Detectors on Each Floor and In Every Bedroom
- Fully Ducted Active HRV – Heat Recovery Ventilation System
- Triple Pane Windows
- Basement Roughed-In for Future 3 Pc Bathroom
- Two Basement Windows offer Plenty of Natural Light
- Two Garage Door Openers
- Rear and Side Developer Fence Included

### Schonsee Showhome

17104 + 17108 75 St. NW, Edmonton AB

P. 780.457.1956

[schonseesales@bedrockhomes.ca](mailto:schonseesales@bedrockhomes.ca)

Job # SCH-0-034179 Lot 22, Block 4, Plan 152 5206

Notes:

---

---

---

---

---

---

---

---

[bedrockhomes.ca](http://bedrockhomes.ca)

VISIT US AT ANY OF OUR SHOWHOMES!

Monday - Thursday 3-8pm, Weekends & Holidays 12-5PM



# The Kent (Ashbury)

1401 SQ FT

17304-81 St. NW

Schonsee



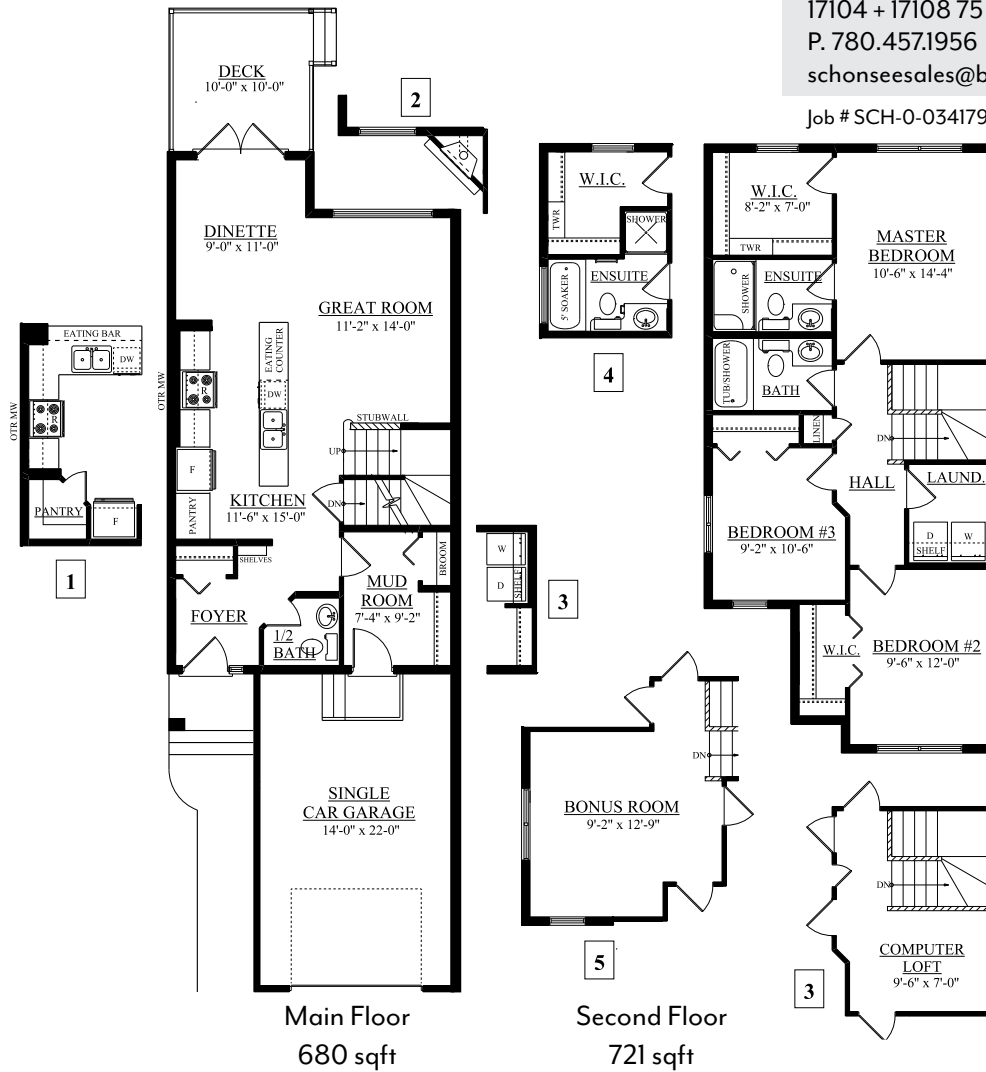
## Schonsee Showhome

17104 + 17108 75 St. NW, Edmonton AB

P. 780.457.1956

[schonseesales@bedrockhomes.ca](mailto:schonseesales@bedrockhomes.ca)

Job # SCH-0-034179 Lot 22, Block 4, Plan 152 5206



[bedrockhomes.ca](http://bedrockhomes.ca)

VISIT US AT ANY OF OUR SHOWHOMES!

Monday - Thursday 3-8pm, Weekends & Holidays 12-5PM

