

# The Madison B

1903 SQ FT

17332-76 St. NW

Schonsee



- 2 storey
- 3 Bedrooms + Bonus room, 2 and ½ bath
- Hardwood flooring throughout main floor with ceramic tile in the rear entry and 2nd floor bathrooms
- Paint grade railing with metal spindles on main floor
- Large L shaped kitchen
- Granite countertops in kitchen
- Large rectangular island with flush eating bar
- 36" Kitchen cabinets
- Pot and pan drawer in kitchen
- Pot and pendent lights in kitchen
- Master bedroom with walk in closet
- 4 piece ensuite featuring double sinks, oversized shower, and corner soaker tub
- Second floor laundry room with white front load washer and dryer
- 2 car front attached garage (20' x 22') insulated and dry walled

### Schonsee Showhome

17104 + 17108 75 St. NW, Edmonton AB

P. 780.457.1956

[schonseesales@bedrockhomes.ca](mailto:schonseesales@bedrockhomes.ca)

Job # SCH-0-033501 Lot 27, Block 07, Plan 122 3878

Notes:

---

---

---

---

---

---

---

---

[bedrockhomes.ca](http://bedrockhomes.ca)

VISIT US AT ANY OF OUR SHOWHOMES!

Monday - Thursday 3-8pm, Weekends & Holidays 12-5PM



# The Madison B

1903 SQ FT

17332-76 St. NW

Schonsee



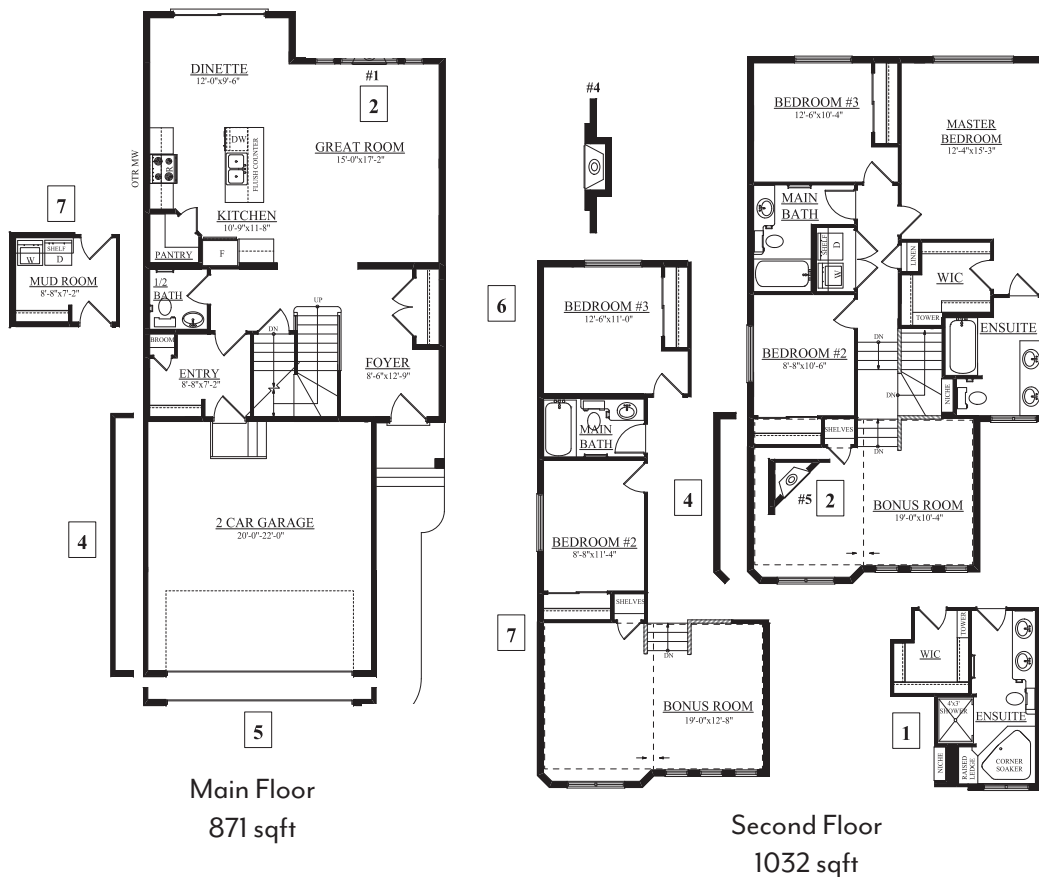
## Schonsee Showhome

17104 + 17108 75 St. NW, Edmonton AB

P. 780.457.1956

[schonseesales@bedrockhomes.ca](mailto:schonseesales@bedrockhomes.ca)

Job # SCH-0-033501 Lot 27, Block 07, Plan 122 3878



[bedrockhomes.ca](http://bedrockhomes.ca)

VISIT US AT ANY OF OUR SHOWHOMES!

Monday - Thursday 3-8pm, Weekends & Holidays 12-5PM

