

The Abbey (Layton)

1526 SQ FT

7891-170A Ave. NW

Schonsee



- 2 storey half duplex
- 3 bedrooms, 2 and ½ bath
- Essentials 2 interior finishing package
- Laminate flooring throughout main floor with ceramic tile in the rear entry and bathrooms
- Large L shaped kitchen with stainless steel appliances
- Tile Backsplash in kitchen
- Kitchen cabinets with crown molding
- Large island with flush eating bar
- Pot and pan drawer in kitchen
- Hunter Douglas blinds package
- Master bedroom with walk in closet
- Main floor laundry room with white front load washer and dryer
- High efficiency furnace and hot water tank
- 3 piece rough in basement ideal for future development
- 2 car front attached garage (19' x 22') insulated and dry walled
- Front and back landscaping with deck and gas line for BBQ
- Added Value
 - Professional moving service
 - Energuide modeled / rated Homes
 - BuiltGreen certified

Schonsee Showhome

17104 + 17108 75 St. NW, Edmonton AB

P. 780.457.1956

schonseesales@bedrockhomes.ca

Job # SCH-0-0333467 Lot 15, Plan 112-0383

Notes:

bedrockhomes.ca

VISIT US AT ANY OF OUR SHOWHOMES!

Monday - Thursday 3-8pm, Weekends & Holidays 12-5PM



The Abbey (Layton)

1526 SQ FT

7891-170A Ave. NW

Schonsee



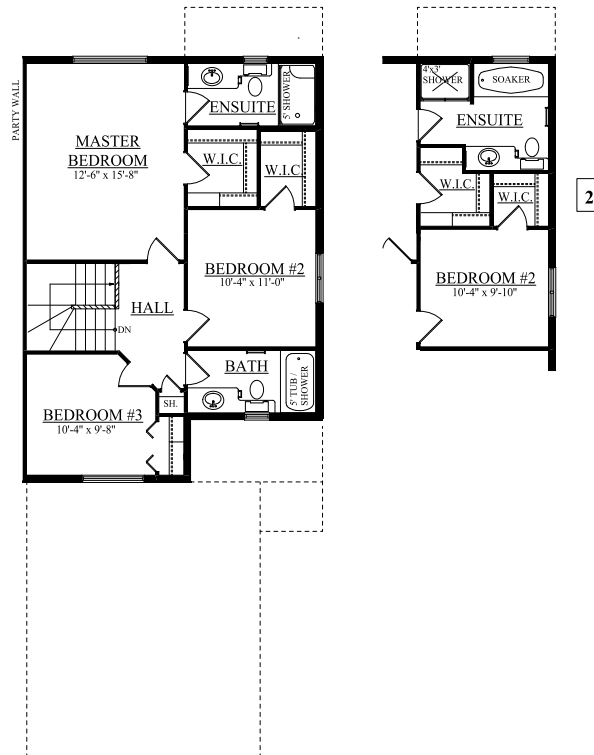
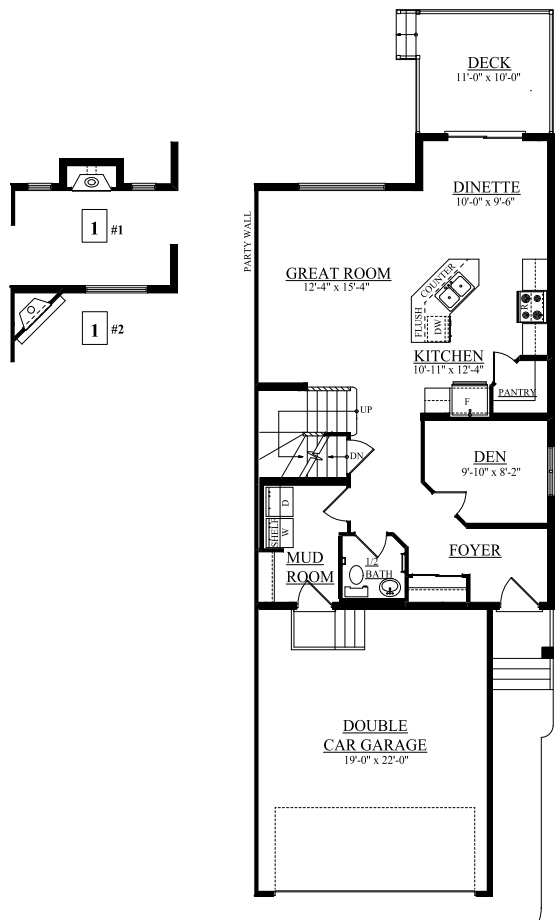
Schonsee Showhome

17104 + 17108 75 St. NW, Edmonton AB

P. 780.457.1956

schonseesales@bedrockhomes.ca

Job # SCH-0-0333467 Lot 15, Plan 112-0383



bedrockhomes.ca

VISIT US AT ANY OF OUR SHOWHOMES!

Monday - Thursday 3-8pm, Weekends & Holidays 12-5PM

