

The Bailey B

1752 SQ FT

7515-174 Ave NW

Schonsee



- 3 Bedrooms, Bonus Room, Second Floor Flex Room and 2.5 Bath
- 9' Ceilings on Main Floor
- Hardwood Flooring Throughout Main Floor
- Paint Grade Railing with Metal Spindles on Main
- Floor Tile in Mud Room and Second Floor Bathrooms
- Great Walk Thru Pantry
- Pot and Pan Drawer in Kitchen
- Pot and Pendent Lights in Kitchen
- Quartz Countertops in Kitchen
- Glass Tile Backsplash in Kitchen
- 41" Upper Cabinets with Riser to Bulkhead in Kitchen
- Upgraded Faucet Package Throughout Home
- Master Bedroom with Walk in Closet
- Upgraded Ensuite Featuring Double Sinks, 5' Shower with Tiled Walls
- 3 piece Rough-In for Future Bathroom in Basement
- Double Front Attached Garage (20' x 22') Insulated and Dry Walled, Windows in Garage Door for Natural Light
- Triple Pane Windows

Schonsee Showhome

17104 + 17108 75 St. NW, Edmonton AB

P. 780.457.1956

schonseesales@bedrockhomes.ca

Job # SCH-0-032964 Lot 9, Block 9, Plan 122-3878

Notes:

bedrockhomes.ca

VISIT US AT ANY OF OUR SHOWHOMES!

Monday - Thursday 3-8pm, Weekends & Holidays 12-5PM

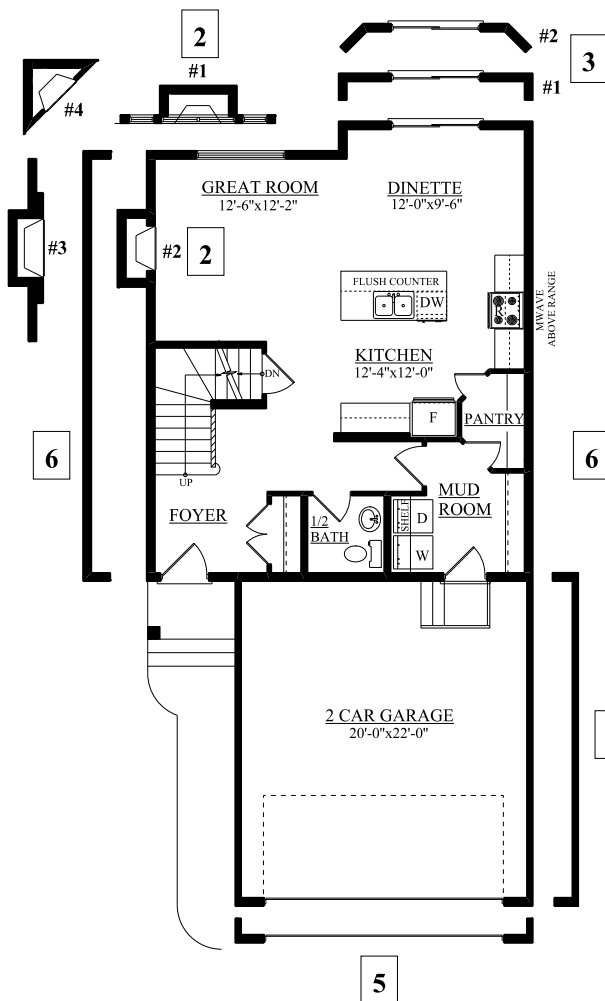


The Bailey B

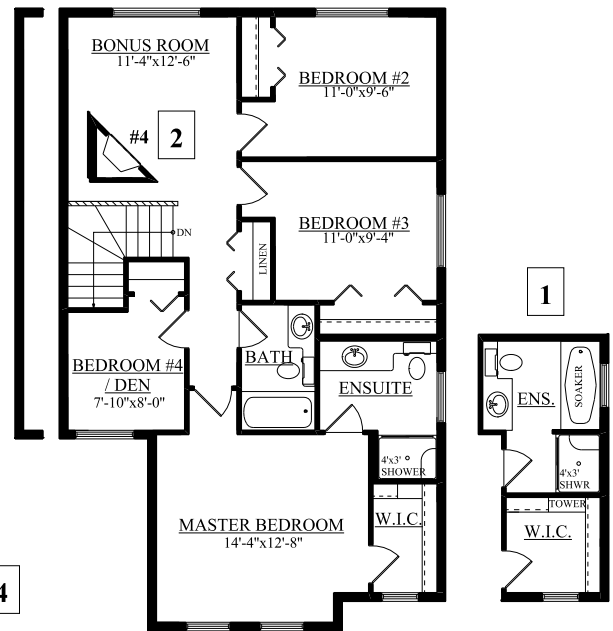
1752 SQ FT

7515-174 Ave NW

Schonsee



Main Floor
780 sqft



Second Floor
867 sqft

Schonsee Showhome

17104 + 17108 75 St. NW, Edmonton AB

P. 780.457.1956

schonseesales@bedrockhomes.ca

Job # SCH-0-032964 Lot 9, Block 9, Plan 122-3878

bedrockhomes.ca

VISIT US AT ANY OF OUR SHOWHOMES!

Monday - Thursday 3-8pm, Weekends & Holidays 12-5PM

