

The Kennedy H

2224 SQ FT

8033 -222A Street NW



- 4 bedrooms, main floor den & 2 ½ bath home with 2224 sqft
- Double car garage widened to 22' x 22'
- Bright main floor has 9' ceiling and vinyl floor
- Linear fireplace the perfect addition to your great room
- Pots and pan drawer for a more organized kitchen
- Upgraded soft close drawers and 41" upper cabinets
- Undermount granite kitchen sink
- Stainless steel appliances with white frontload washer & dryer
- Beautiful quartz countertops throughout the home
- Handrail with metal spindles on main floor
- 8 lbs. carpet underlay
- Laundry room conveniently located on the 2nd floor
- 4 piece master ensuite features double sink and corner soaker tub
- Perfect size walk-in closet in master bedroom
- 50 US gallon hot water tank, and triple pane windows with low E, & argon
- Astonishing exterior elevation with stone accents on garage and pillar
- Christmas light switch and soffit outlet
- Precast cement front steps
- Rosenthal address plate installed

Rosenthal Showhome
8170 - 222A Street NW,
Edmonton 780.705.3765
rosenthal@bedrockhomes.ca

Job # ROS-0-034206 Lot 6, Block 21, Plan 172-3550

Notes:

bedrockhomes.ca

VISIT US AT ANY OF OUR SHOWHOMES!

Monday - Thursday 3-8pm, Weekends & Holidays 12-5PM



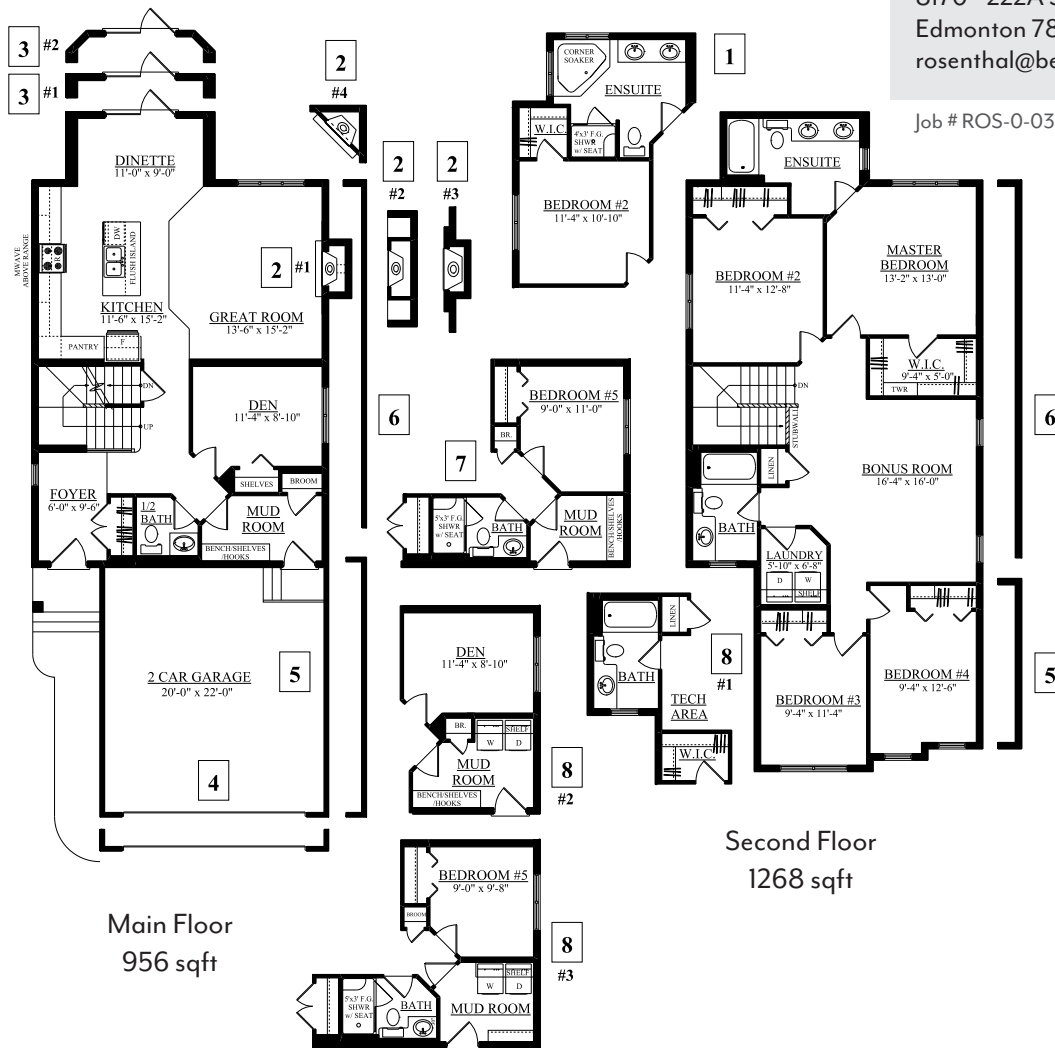
The Kennedy H

2224 SQ FT
8033 -222A Street NW



Rosenthal Showhome
8170 - 222A Street NW,
Edmonton 780.705.3765
rosenthal@bedrockhomes.ca

Job # ROS-0-034206 Lot 6, Block 21, Plan 172-3550



bedrockhomes.ca

VISIT US AT ANY OF OUR SHOWHOMES!
Monday - Thursday 3-8pm, Weekends & Holidays 12-5PM

