



BEDROCK
HOMES

KINGSTON H

1935 SQ FT
9506 Pear Close SW



ROCHA IN THE ORCHARDS SHOWHOME

9506 Pear Close SW, Edmonton
780.440.4011
rocha@bedrockhomes.ca

Job # ROC 4479
Lot 16, Block Showhome, Plan 222-0072

DETAILS

- This Modern home is equipped with tons of smart home features including Brilliant Smarthome Panels, Ring Doorbell and Smart Appliances!
- Scenic pond backing lot!
- Gorgeous 3 bedroom 2.5 bath home with a spacious bonus room on the 2nd floor.
- The upper wing highlights roomy bedrooms, upper laundry and a owner's retreat featuring a 5 piece ensuite with smart shower!
- Durable and stylish luxury vinyl plank flooring on the main floor. Lush stain resistant carpet on the second floor.
- Electric fire and ice linear fireplace in great room with timer, color control and a recessed HDMI box located above for ease of TV mount
- Gorgeous quartz countertops throughout the home.
- Modern, contemporary low maintenance kitchen featuring 41" upper cabinets to ceiling.
- Follow the beautiful spindle railing upstairs and escape to the spa like master ensuite which boasts dual undermount sinks
- 6 piece Samsung smart appliance package!
- Triple pane Low E Argon gas filled Energy Star rated windows contributing to increased energy efficiency and outside noise reduction.
- Our energy efficient, healthier living homes are equipped with a 96% high efficiency furnace, 80 gal electric high efficiency HWT, LED bulbs throughout, carbon monoxide detector, humidifier and HRV (Heat Recovery Ventilator)
- Brilliant Smart Home Automation. Control your home from the all-in-one app. Control your thermostat, View your video door bell and lock/unlock your door, Turn off/on, or dim all enabled lights from anywhere.

BUILT TO LAST \\ **BEDROCKHOMES.CA**

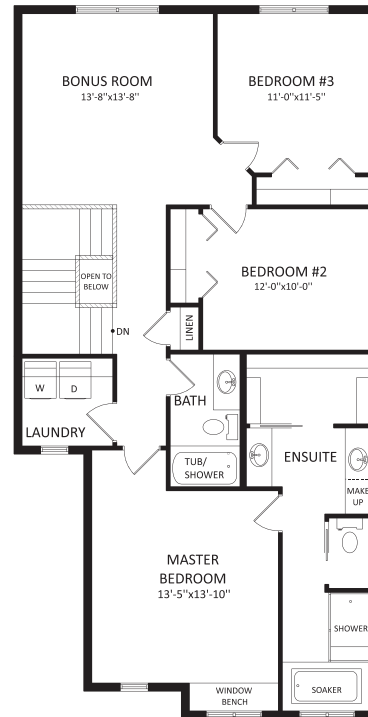
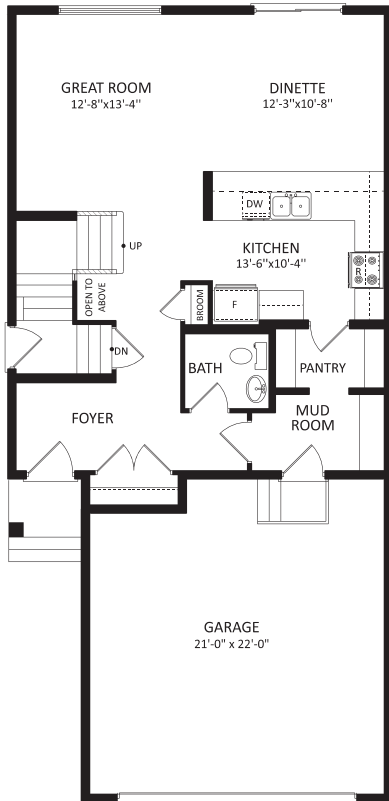
SPEC 2023 - Bedrock Homes Ltd. reserves the right to modify floorplans, renderings, elevations and features in a continuing effort to improve product quality. Floorplans, specifications & prices are subject to change without notice. Errors & omissions exempt.



ROCHA IN THE ORCHARDS SHOWHOME

9506 Pear Close SW, Edmonton
780.440.4011
rocha@bedrockhomes.ca

Job # ROC 4479
Lot 16, Block Showhome, Plan 222-0072



KINGSTON H