



BEDROCK
HOMES

RUBY B

1928 SQ FT
446 Roberts Crescent



ROBINSON SHOWHOME

30 Roberts Close, Leduc
780.980.8506
robinson@bedrockhomes.ca

Job # ROB-0-034999
Lot 28, Block 8, Plan N/A

DETAILS

- If you love an open concept floor plan, this home is perfect for you. With a large quartz island, undermounted sink facing the back window, wall pantry, included appliances, mudroom and main floor Brilliant Smart Home system.
- Stunning kitchen interior with dark blue cabinets, sleek white quartz counter tops, and a light grey backsplash. Creating the perfect aesthetic.
- Included six piece Samsung stainless steel appliances keeps the kitchen chic looking.
- Main floor half bath conveniently located near the front entrance for guests.
- Large rear facing primary bedroom with functional ensuite that leads to the huge walk in closet, then connects through to the laundry room, which is also accessible from the hall.
- Enjoy the ensuite with its double sinks, quartz countertops, and private water closet.
- Spacious walk in closet and laundry room. All four rooms flow together in a loop with doors in between.
- Relax on the second floor in the front facing bonus area that can be used as a home office, reading nook and so much more.
- Secondary bedrooms are facing the front. Allowing more privacy between them and the master suite.
- Front attached double car garage
- Included Brilliant Smart Home package. Control lights, front door lock, garage door and thermostat all on the panel or a convenient phone app.

RUBY B

RUBY B

1928 SQ FT
446 Roberts Crescent

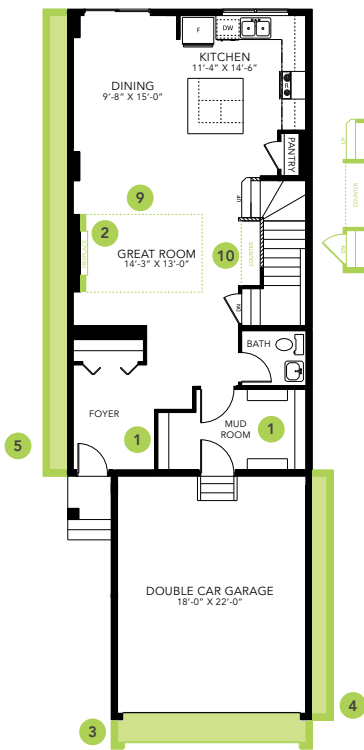


ROBINSON SHOWHOME

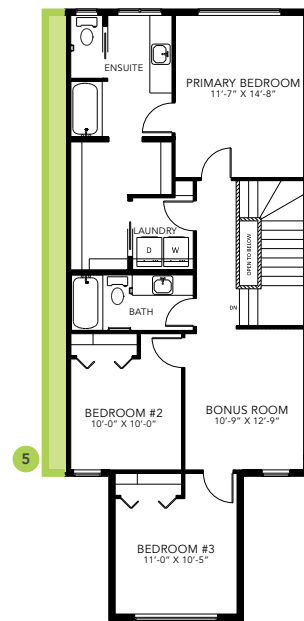
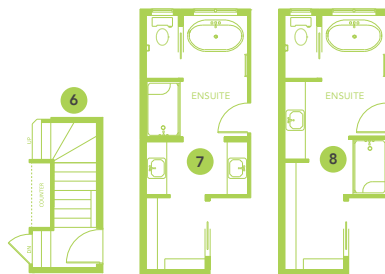
30 Roberts Close, Leduc
780.980.8506
robinson@bedrockhomes.ca

Job # ROB-0-034999
Lot 28, Block 8, Plan N/A

RUBY B



Main Floor
924 SQ FT



Second Floor
1004 SQ FT

