



BEDROCK
HOMES

SASHA B

1564 SQ FT
260 Rolston Wynd



ROBINSON SHOWHOME

30 Roberts Close, Leduc
780.980.8506
robinson@bedrockhomes.ca

Job # ROB-0-034991
Lot 31, Block 11, Plan 2122092

DETAILS

- Our Sasha is a beautiful open concept laned home that includes a large front foyer and rear mudroom allowing loads of storage and comfort no matter how you enter the home.
- This home has a great designer kitchen with ceiling height cabinets, a huge island with an eating bar. Fall in love with the stunning white quartz countertops, grey backsplash and sleek dark blue cabinets.
- Our homes come with a six piece Samsung appliance package and Brilliant smart home system.
- Good sized primary bedroom at the front of the home. Enjoy the lovely ensuite with dual undermounted sinks and quartz countertops. Along with a large walk in closet off the ensuite.
- Central bonus room between primary suite and secondary bedrooms gives added privacy.
- Secondary bedrooms are located at the back of the home with big windows, one of the bedrooms has a walk in closet as well.
- Laundry is on the second floor making everyone's lives easier.
- This home would not be complete without a 20'x22' parking pad, perfect for a future oversized double garage!

SASHA B

SASHA B

1564 SQ FT
260 Rolston Wynd

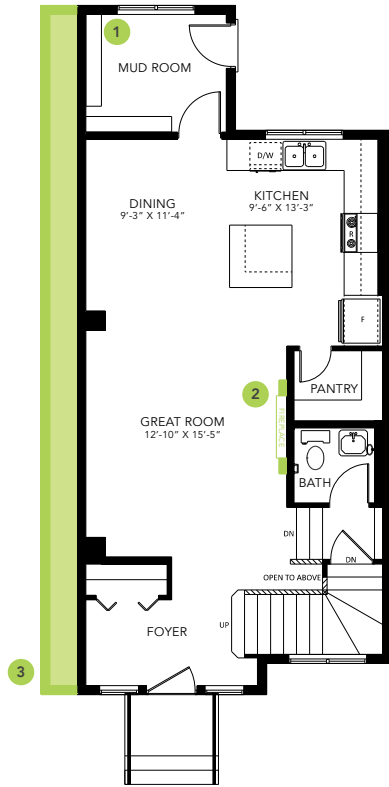


ROBINSON SHOWHOME

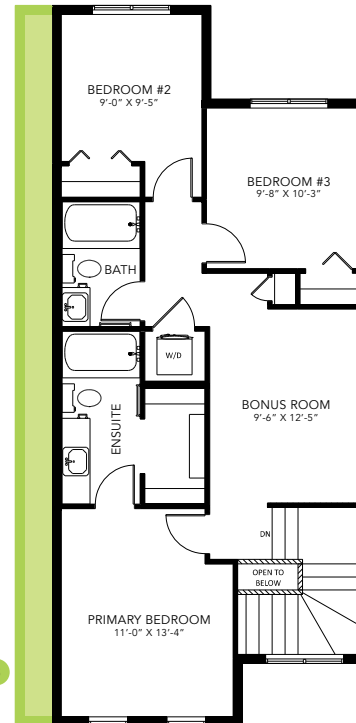
30 Roberts Close, Leduc
780.980.8506
robinson@bedrockhomes.ca

Job # ROB-0-034991
Lot 31, Block 11, Plan 2122092

SASHA B



Main Floor
784 SQ FT



Second Floor
780 SQ FT