

AMELIA B

1725 SQ FT
16 Roberts Close



ROBINSON SHOWHOME

42 Rolston Close, Leduc
780.980.8506
robinson@bedrockhomes.ca

Job # ROB-0-034396
Lot 12, Block 9, Plan 182-2929

Over
\$31,400
in Designer
Upgrades

DETAILS

- Original Price \$431,368
- Current Price \$399,900
- Instant Savings \$31,468
- Additional value of upgrades in this home \$31,468
- 9' ceilings on main floor with upgraded wider garage
- 3 bedroom 2.5 bath home with a spacious bonus room and second floor laundry
- Luxury vinyl flooring in the mudroom, foyer, kitchen, all bathrooms and laundry room
- Linear electric fireplace in great room
- Upgraded stub wall to railing with metal spindles on main floor and second floor
- Maple kitchen cabinets raised to ceiling with an upgraded backsplash
- Stainless steel Samsung appliances in the kitchen
- Ensuite with his and her sinks
- Quartz countertops throughout the home
- Triple Pane low E argon filled energy star rated windows
- Heat Recovery Ventilator, high efficiency furnace and hot water tank
- Large pie lot

AMELIA B

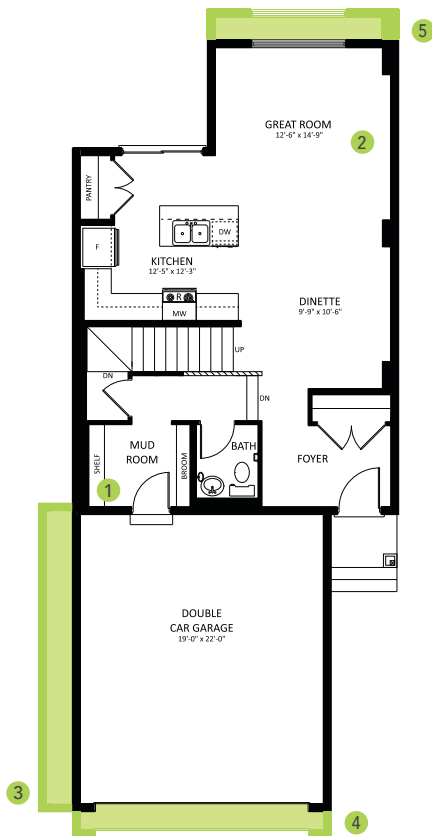
1725 SQ FT
16 Roberts Close



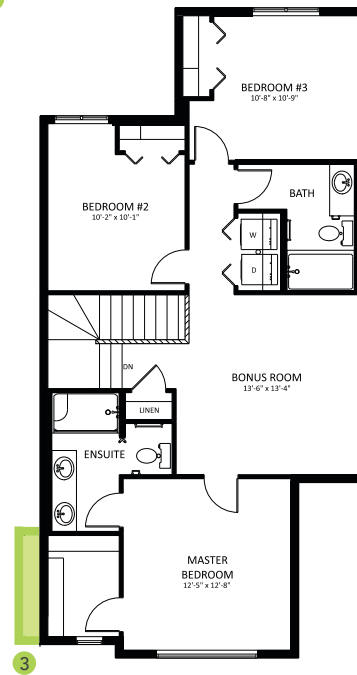
ROBINSON SHOWHOME

42 Rolston Close, Leduc
780.980.8506
robinson@bedrockhomes.ca

Job # ROB-0-034396
Lot 12, Block 9, Plan 182-2929



Main Floor
760 SQ FT



Second Floor
965 SQ FT

