

# Kent Ashbury

1401 SQ FT

9 Rolston Court



- 3 Bedrooms, 2.5 bathrooms w/2nd floor laundry
- 2018 Emerge Samsung Appliance Package Included
- Upgraded Bright Chrome hardware package included
- Kitchen features an upgraded tile backsplash, a pot and pan drawer, and 1-1/4" Quartz countertops
- Duplex outlets w/USB charging ports in kitchen and master bedroom
- Upgraded to railing with metal spindles on main floor
- LED surface-mount pot lights in kitchen, great room and hallways
- Luxury vinyl plank flooring throughout entire main floor, foyer, mudroom and bathrooms
- Mohawk carpet w/Smartstrand protection
- Heat recovery ventilator and high efficiency furnace
- Nest Smart Thermostat

## Robinson Showhome

49 Rolston Close, Edmonton

780.980.8513

robinson@bedrockhomes.ca

Job # ROB-0-034254 Lot 98, Block 6, Plan 172 2996

### Notes:

---

---

---

---

---

---

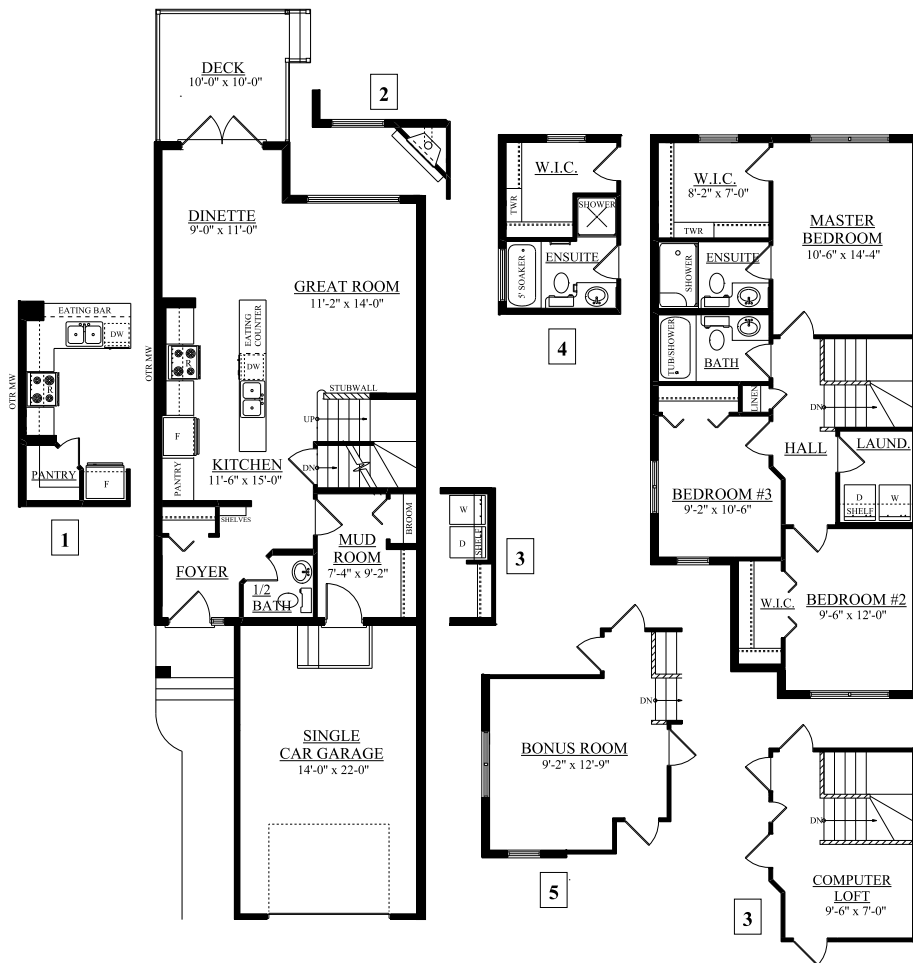
**bedrockhomes.ca**

VISIT US AT ANY OF OUR SHOWHOMES!

Monday - Thursday 3-8pm, Weekends & Holidays 12-5PM



**Kent Ashbury**  
 1401 SQ FT  
 9 Rolston Court



Main Floor  
680 sqft

Second Floor  
721 sqft

**Robinson Showhome**

49 Rolston Close, Edmonton  
 780.980.8513  
 robinson@bedrockhomes.ca

Job # ROB-0-034254 Lot 98, Block 6, Plan 172 2996

[bedrockhomes.ca](http://bedrockhomes.ca)

VISIT US AT ANY OF OUR SHOWHOMES!  
 Monday - Thursday 3-8pm, Weekends & Holidays 12-5PM

