

The Kingston B

1966 SQ FT

548 Reynalds Wynd

Leduc, Alberta



- 3 Bedrooms + Bonus Room, 2 and ½ Bath
- 9' Ceilings on Main Floor
- Laminate Flooring Throughout Main Floor
- Floor Tile in Mud Room and Second Floor Bathrooms
- Pot and Pan Drawer in Kitchen
- Pot and Pendent Lights in Kitchen
- Quartz Countertops in Kitchen
- 41" Upper Cabinets with Riser to Bulkhead in Kitchen
- Upgraded Frosted Glass Door on Pantry
- Upgraded Faucet Package Throughout Home
- Master Bedroom with His and Hers Walk-in Closets
- Upgraded Ensuite Featuring Double Sinks, 5' Tiled Shower With Fiberglass Base and Glass Sliding Door
- Second Floor Laundry Room with Tile Floor
- 9' Basement Foundation with Mechanical Rough-in for Future Basement Suite
- Side Entrance For Future Basement Suite, Includes Sidewalk to Entrance
- Double Front Attached Garage (23' x 24') Insulated and Dry Walled
- This Lot Offers Privacy in the Back Yard
- Rear Developer Fence
- Triple Pane Windows

Robinson Showhome

44 & 42 Rolston Close, Leduc AB

780.980.8506

robinson@bedrockhomes.ca

Job # ROB-0-034193 Lot 43, Block 2, Plan 132 4399

Notes:

bedrockhomes.ca

VISIT US AT ANY OF OUR SHOWHOMES!

Monday - Thursday 3-8pm, Weekends & Holidays 12-5PM



BEDROCK HOMES
Single Family Housing

The Kingston B

1966 SQ FT

548 Reynalds Wynd

Leduc, Alberta



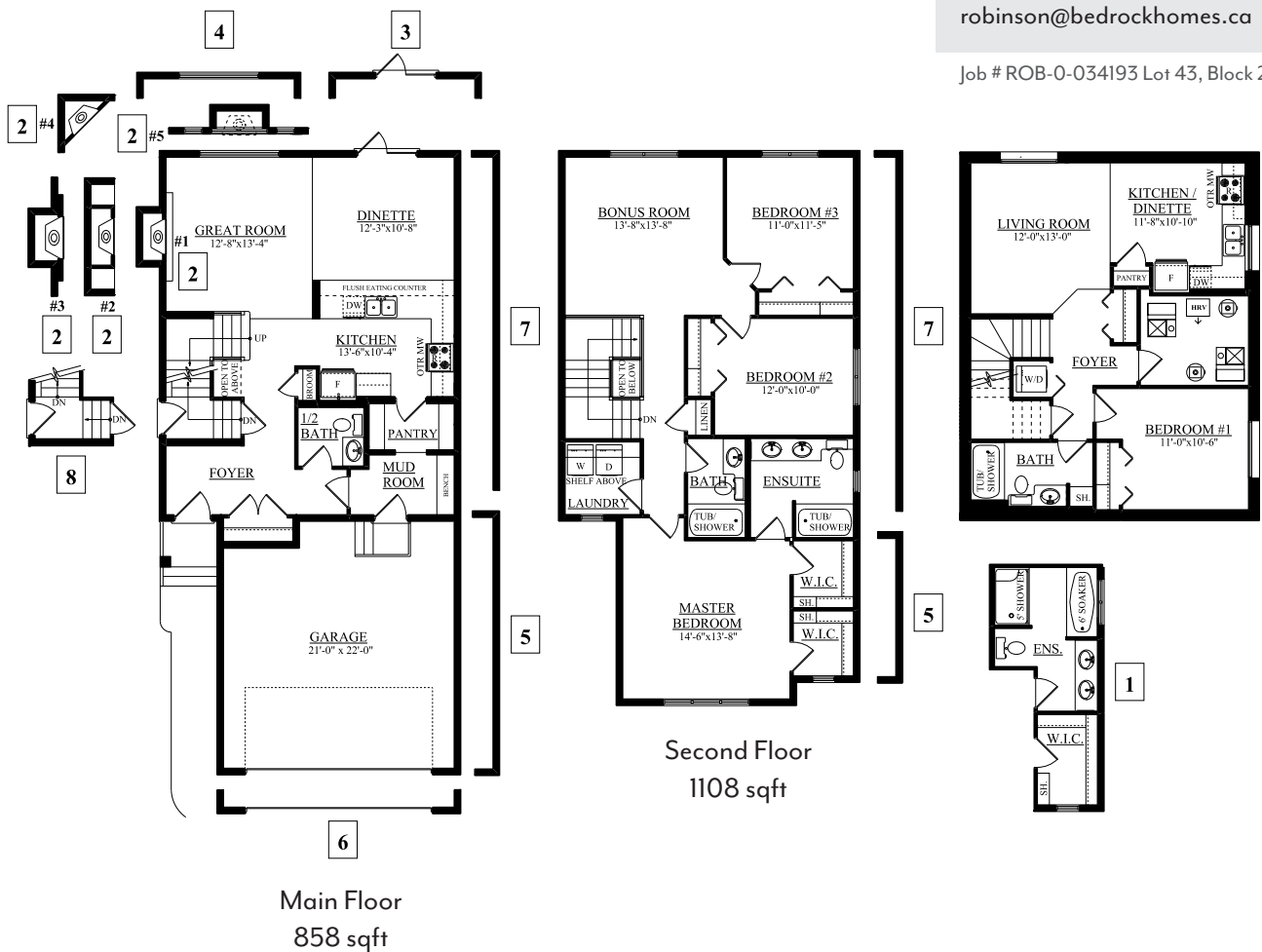
Robinson Showhome

44 & 42 Rolston Close, Leduc AB

780.980.8506

robinson@bedrockhomes.ca

Job # ROB-0-034193 Lot 43, Block 2, Plan 132 4399



bedrockhomes.ca

VISIT US AT ANY OF OUR SHOWHOMES!

Monday - Thursday 3-8pm, Weekends & Holidays 12-5PM

