

The Adele (Ashton)

1725 SQ FT

8 Rolston Close

Leduc, Alberta



- Beautiful 3 Bedroom, 2 ½ Bath + Bonus Room Duplex with Double Car Garage
- Laminate Floors Throughout the Main Floor
- Pot and Pendant Lights in Kitchen
- Tile Floors in the Second Floor Baths, and Mud Room
- Stunning Quartz Countertops w/ Maple Cabinets
- Double Undermount Stainless Steel Sinks with Spray Faucet
- Massive Island with Plenty of Room for Eating, Cooking and Socializing
- Pot and Pan Drawers and Large 36" Cabinet Pantry offer Plenty of Storage in the Kitchen
- Main Floor Den with Window Providing Natural Light
- Main and Second Floor Railing w/ Metal Spindles
- 40 Gallon Hot Water Tank
- Very Large Pie Lot Backing Toboggan Hill and Farmers Field
- Rear Developer Fence
- Smoke Detectors on Each Floor and In Every Bedroom
- Fully Ducted Active HRV – Heat Recovery Ventilation System
- Triple Pane Windows
- Basement Roughed-In for Future 3 Pc Bathroom
- Two Garage Door Openers

Robinson Showhome

44 & 42 Rolston Close, Leduc AB

780.980.8506

jgilroy@bedrockhomes.ca

Job # ROB-0-033699 Lot 64, Block 6, Plan 152 0051

Notes:

bedrockhomes.ca

VISIT US AT ANY OF OUR SHOWHOMES!

Monday - Thursday 3-8pm, Weekends & Holidays 12-5PM

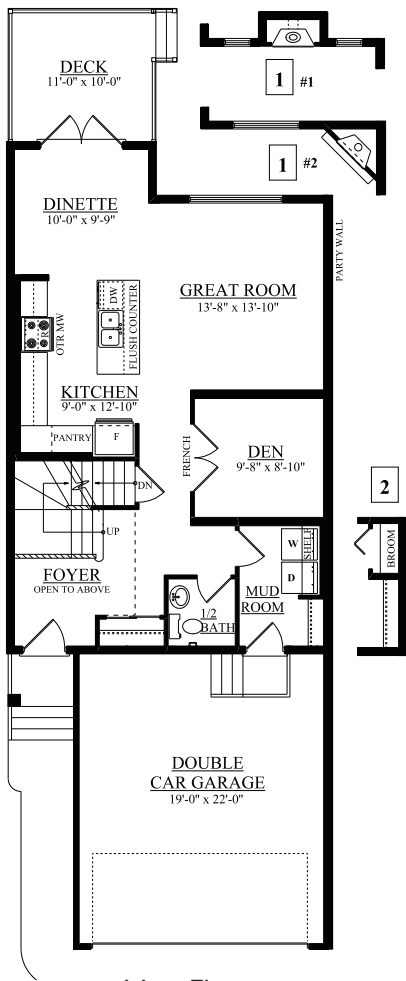


The Adele (Ashton)

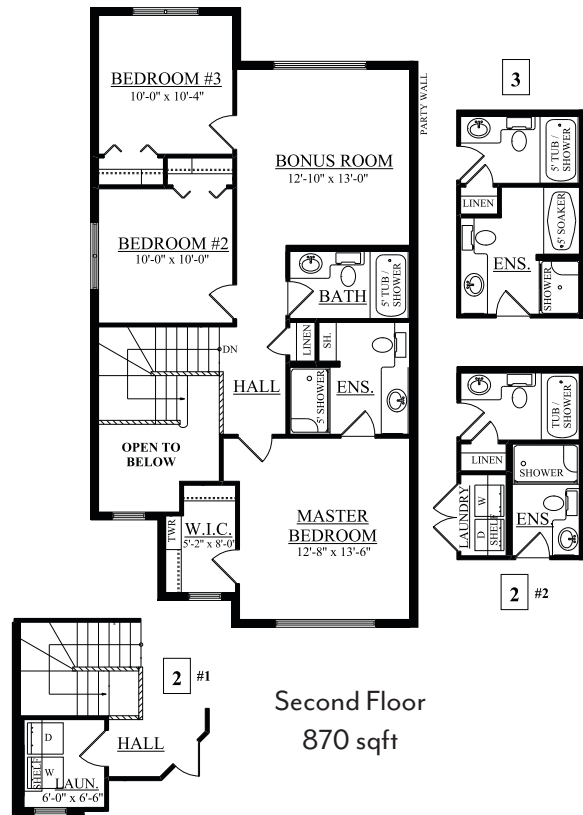
1725 SQ FT

8 Rolston Close

Leduc, Alberta



Main Floor
855 sqft



Second Floor
870 sqft

Robinson Showhome

44 & 42 Rolston Close, Leduc AB

780.980.8506

gjilroy@bedrockhomes.ca

Job # ROB-0-033699 Lot 64, Block 6, Plan 152 0051

bedrockhomes.ca

VISIT US AT ANY OF OUR SHOWHOMES!

Monday - Thursday 3-8pm, Weekends & Holidays 12-5PM

