

Abbey (Devon)

1562 SQ FT

12 Rolston Close

Leduc, Alberta



- Beautiful 3 Bedroom, 2 ½ Bath Duplex with Double Car Garage
- Corner Main Floor Fireplace
- Laminate Floors Throughout the Main Floor
- Tile Floors in the Second Floor Baths, and Mud Room
- Stunning Quartz Countertops
- Double Undermount Stainless Steel Sinks with Spray Faucet
- Kitchen Offers a Flush Island and Corner Walk-In Pantry
- Main Floor Den with Window Providing Natural Light
- Main Floor Railing w/ Metal Spindles
- 40 Gallon Hot Water Tank
- Beautiful Pie Lot Backing Park with Lots of Privacy
- Rear Developer Fence
- Smoke Detectors on Each Floor and In Every Bedroom
- Fully Ducted Active HRV – Heat Recovery Ventilation System
- Triple Pane Windows
- Basement Roughed-In for Future 3 Pc Bathroom
- Two Garage Door Openers

Robinson Showhome

44 & 42 Rolston Close, Leduc AB

780.980.8506

robinson@bedrockhomes.ca

Job # ROB-0-033697 Lot 62, Block 6, Plan 152 0051

Notes:

bedrockhomes.ca

VISIT US AT ANY OF OUR SHOWHOMES!

Monday - Thursday 3-8pm, Weekends & Holidays 12-5PM



Abbey (Devon)

1562 SQ FT

12 Rolston Close

Leduc, Alberta



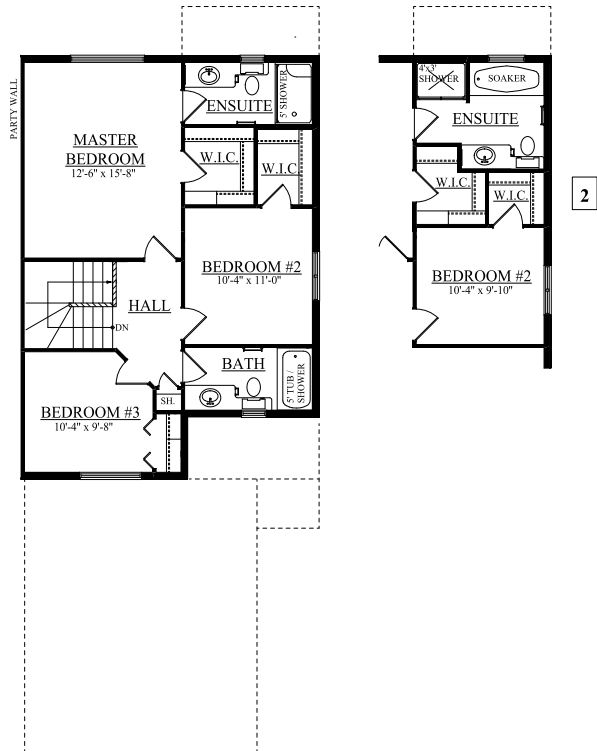
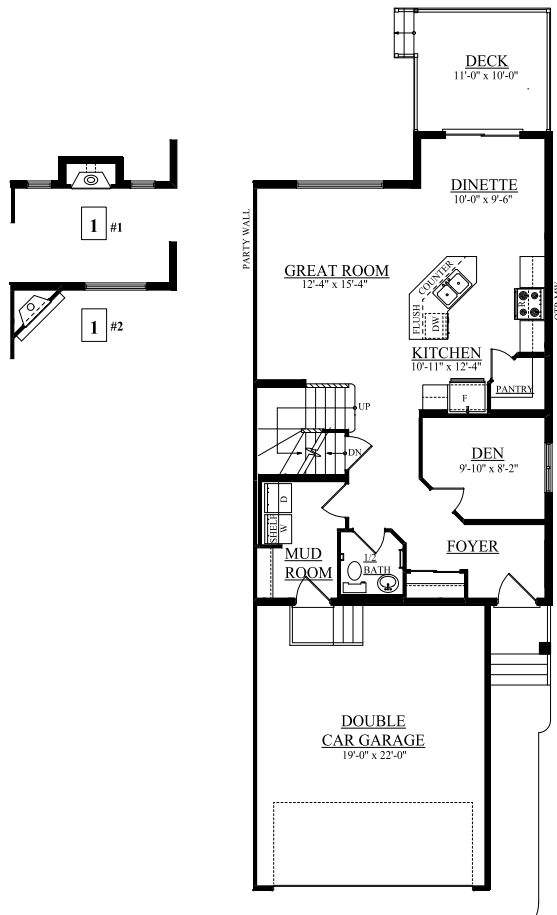
Robinson Showhome

44 & 42 Rolston Close, Leduc AB

780.980.8506

robinson@bedrockhomes.ca

Job # ROB-0-033697 Lot 62, Block 6, Plan 152 0051



bedrockhomes.ca

VISIT US AT ANY OF OUR SHOWHOMES!

Monday - Thursday 3-8pm, Weekends & Holidays 12-5PM

