

Ashbury (Rydale)

1401 SQ FT

26 Rolston Close

Leduc, Alberta



- Beautiful 3 Bedroom, 2 ½ Bath with Single Car Garage
- Second Floor Laundry
- Upgraded to Railing with Metal Spindles on Main Floor
- Hardwood on Main Floor, Tile in 2nd Floor Baths and Mudroom
- Kitchen Features Glass Tile Backsplash, Pendant and Pot Lights, Pot and Pan Drawer, and 1-1/4" Quartz Countertops
- Kitchen Features U-Shaped Island and Corner Pantry
- Upgraded Railing with Metal Spindles on Main Floor
- Upgraded Faucets
- Master Bedroom has Large Walk-in Closet and Ensuite w/5' Walk-in Shower
- 9' Foundation Walls for Future Basement Development w/Rough-in for 3-pc Bathroom
- Includes Rear Developer Fence, 2 Garage Door Openers, and 2 Basement Windows for Plenty of Natural Light
- Heat Recovery Ventilator, High Efficiency Furnace and 40 Gallon Hot Water Tank
- Triple Pane, Low-E, Argon-filled Energy Star Rated Windows
- Driveway and Sidewalk are Concrete Sealed
- Exterior Colours Include Mitten Brownstone Siding and Mitten Bone Board and Batten

Robinson Showhome

44 & 42 Rolston Close, Leduc AB

780.980.8506

robinson@bedrockhomes.ca

Job # ROB-0-033696 Lot 55, Block 6, Plan 152 0051

Notes:

bedrockhomes.ca

VISIT US AT ANY OF OUR SHOWHOMES!

Monday - Thursday 3-8pm, Weekends & Holidays 12-5PM



Ashbury (Rydale)

1401 SQ FT

26 Rolston Close

Leduc, Alberta



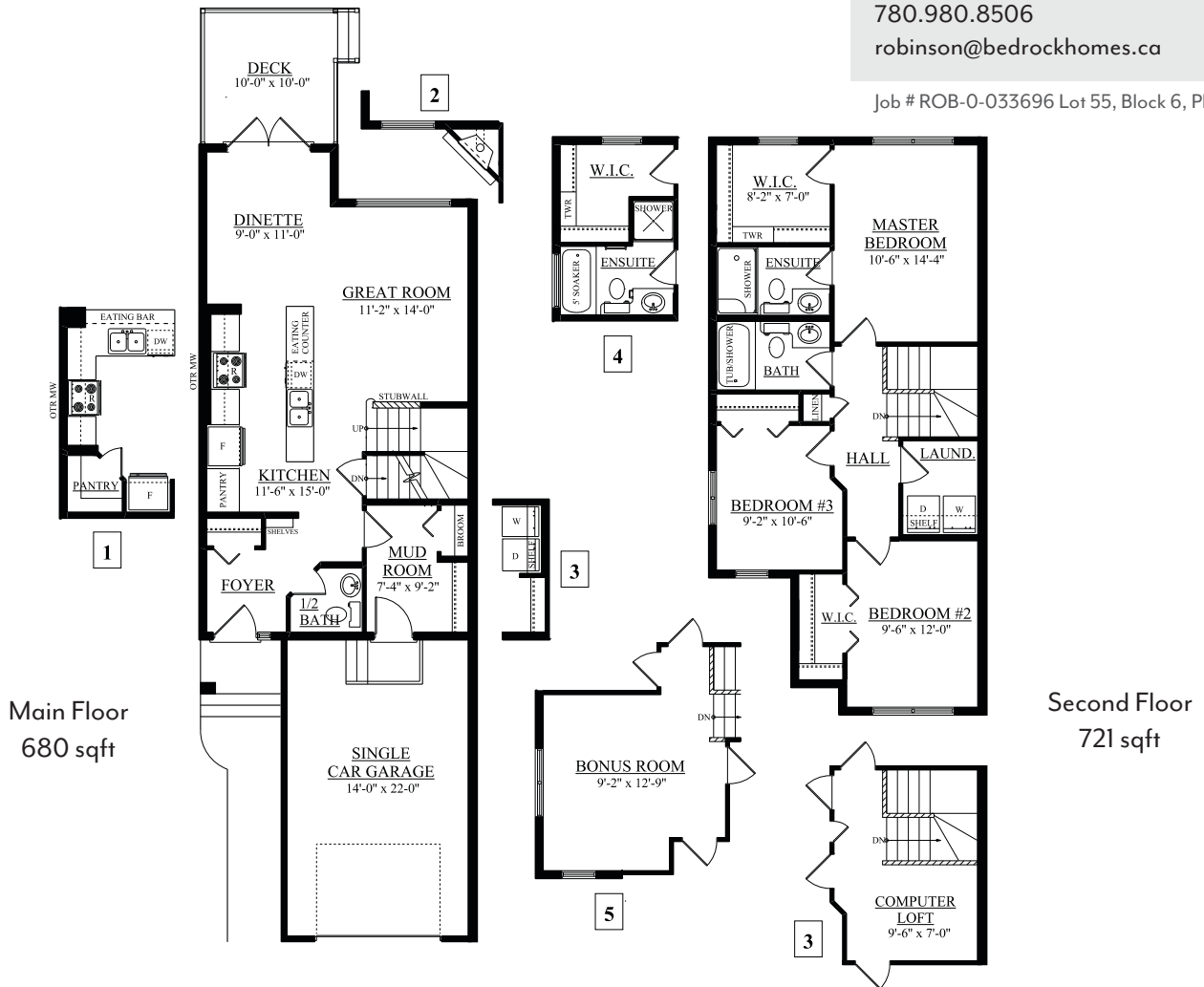
Robinson Showhome

44 & 42 Rolston Close, Leduc AB

780.980.8506

robinson@bedrockhomes.ca

Job # ROB-0-033696 Lot 55, Block 6, Plan 152 0051



bedrockhomes.ca

VISIT US AT ANY OF OUR SHOWHOMES!

Monday - Thursday 3-8pm, Weekends & Holidays 12-5PM

