

The Camden (Rydale)

1396 SQ FT

28 Rolston Close

Leduc, Alberta



- Beautiful Double Master Bedroom, 2 ½ Bath Duplex with Single Car Garage
- Laminate Floors Throughout the Main Floor
- Tile Floors in the Second Floor Baths, and Mud Room
- Stunning Quartz Countertops w/Backsplash Finish the Kitchen
- Double Undermount Stainless Steel Sinks with Spray Faucet
- Massive Island with Plenty of Room for Eating, Cooking and Socializing
- Pot and Pan Drawers and Large 36" Cabinet Pantry offer Plenty of Storage in the Kitchen
- Both Master Bedrooms Have a Large Walk-In Closet and Ensuite w/ 5' Walk-In Shower
- 9' Foundation for Future Development
- 40 Gallon Hot Water Tank
- Smoke Detectors on Each Floor and In Every Bedroom
- Fully Ducted Active HRV – Heat Recovery Ventilation System
- Triple Pane Windows
- Basement Roughed-In for Future 3 Pc Bathroom
- Two Basement Windows offer Plenty of Natural Light
- Two Garage Door Openers
- Rear and Side Developer Fence Included

Robinson Showhome

44 & 42 Rolston Close, Leduc AB

780.980.8506

jgilroy@bedrockhomes.ca

Job # ROB-0-033695 Lot 54, Block 6, Plan 152 0051

Notes:

bedrockhomes.ca

VISIT US AT ANY OF OUR SHOWHOMES!

Monday - Thursday 3-8pm, Weekends & Holidays 12-5PM



The Camden (Rydale)

1396 SQ FT

28 Rolston Close

Leduc, Alberta



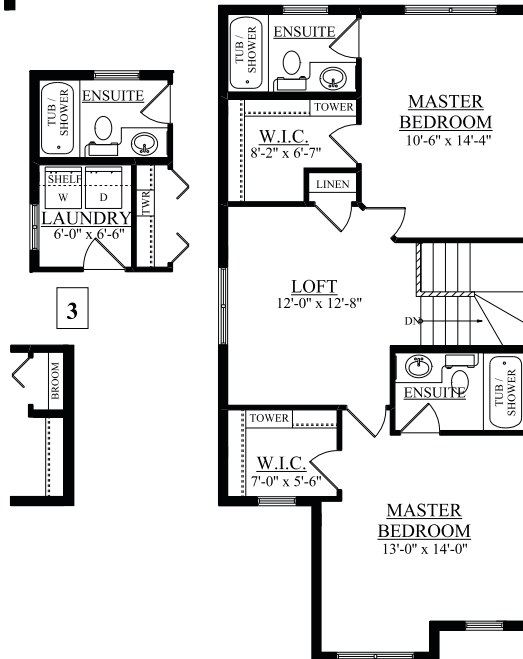
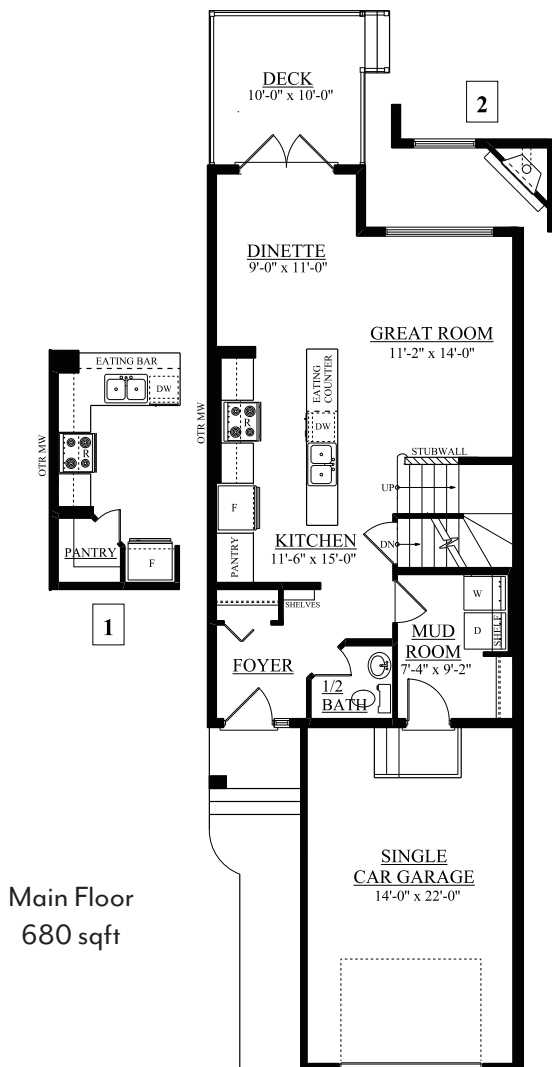
Robinson Showhome

44 & 42 Rolston Close, Leduc AB

780.980.8506

jgilroy@bedrockhomes.ca

Job # ROB-0-033695 Lot 54, Block 6, Plan 152 0051



bedrockhomes.ca

VISIT US AT ANY OF OUR SHOWHOMES!

Monday - Thursday 3-8pm, Weekends & Holidays 12-5PM

