

The Avalon C

1750 SQ FT

500 Roberts Crescent

Leduc, Alberta



- Fully upgraded previous showhome backing onto the pond
- 4 Bedrooms + loft with 3 and ½ bathrooms
- Fully developed basement featuring a bedroom and full bathroom
- Quartz countertops in kitchen and all of the bathrooms
- Beautiful hardwood with a barn wood look
- Fireplace off the back of the house
- Upgraded maple and metal railing throughout the house
- 4 Piece ensuite with a 6' bathtub and beautiful tiled shower
- Upgrade lighting package with pot and pendent lights in kitchen
- 6 Piece stainless steel appliances
- 23' x 24' oversized garage
- Audio system
- Blinds and full window coverings
- Full landscaping and mostly fenced yard
- Christmas soffit plug
- 12x12 rear deck
- Corner lot backing the pond with a water fountain

Robinson Showhome

44 & 42 Rolston Close, Leduc AB

780.980.8506

robinson@bedrockhomes.ca

Job # ROB-0-033415 Lot 1, Block 8, Plan 132 4735

Notes:

bedrockhomes.ca

VISIT US AT ANY OF OUR SHOWHOMES!

Monday - Thursday 3-8pm, Weekends & Holidays 12-5PM



The Avalon C

1750 SQ FT

500 Roberts Crescent

Leduc, Alberta



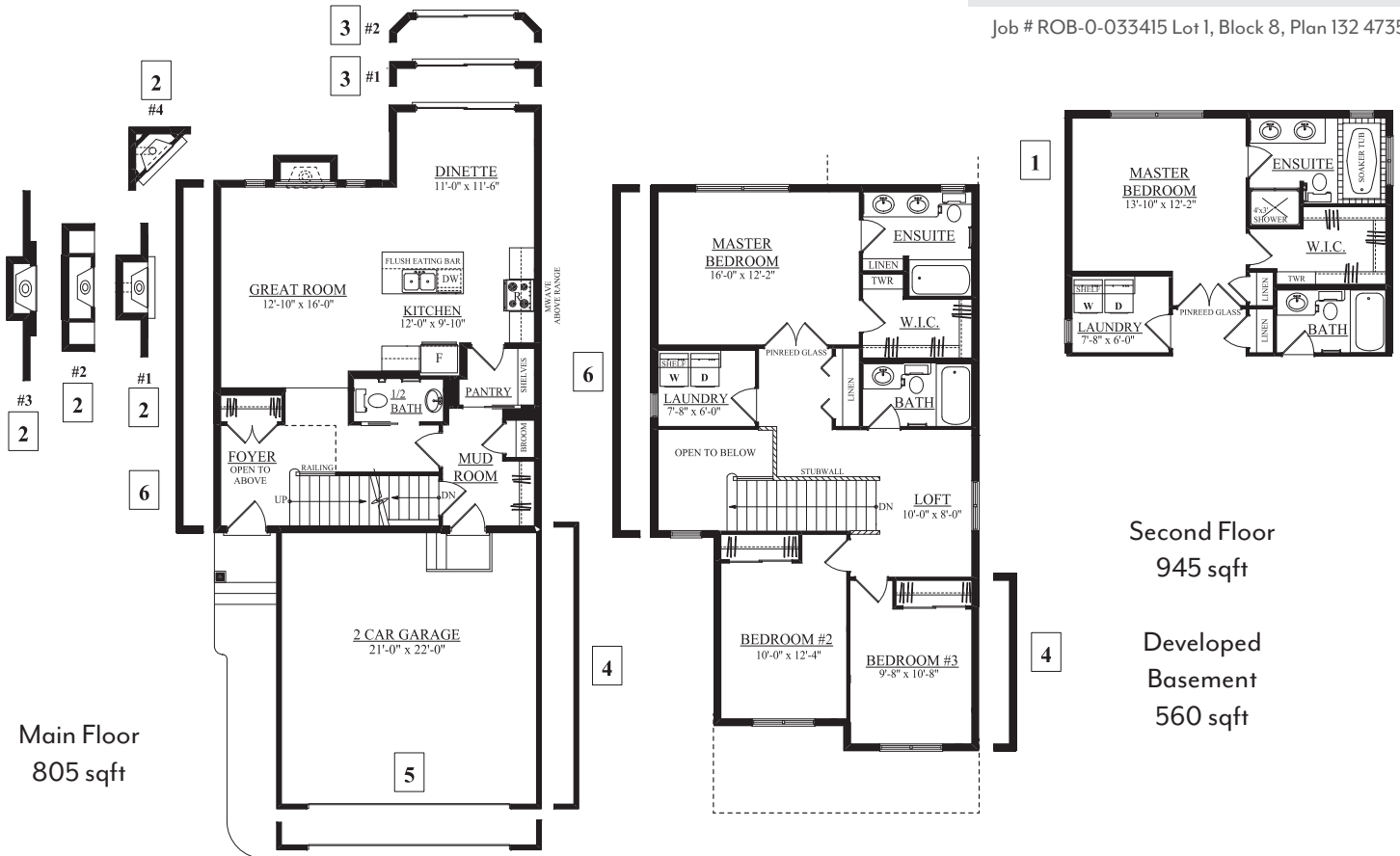
Robinson Showhome

44 & 42 Rolston Close, Leduc AB

780.980.8506

robinson@bedrockhomes.ca

Job # ROB-0-033415 Lot 1, Block 8, Plan 132 4735



bedrockhomes.ca

VISIT US AT ANY OF OUR SHOWHOMES!

Monday - Thursday 3-8pm, Weekends & Holidays 12-5PM

