



BEDROCK
HOMES

KENNEDY P

2203 SQ FT
44 Prospect Place



PRESCOTT SHOWHOME

3 Prospect Place, Spruce Grove
587.461.7809
prescott@bedrockhomes.ca

Job # PRC - 0-035340
Lot 43, Block 106, Plan 202-2442

DETAILS

- Corner WALK-OUT lot backing onto green space/creek
- Steps from the K-9 School, Park and running trails
- Den/office on the Main Floor with 3 Bedrooms, 2.5 bathrooms and large bonus room upstairs
- 22x22 Attached Double car Garage
- Walk-Out Basement (undeveloped)
- 9' Ceilings on Main and 9' foundation walls
- 6 pc Samsung Stainless Steel Appliances with white high efficiency front load washer/dryer
- Upgraded Kitchen Backsplash
- Dual vanities in the ensuite
- Rear deck
- Upgraded Siding to a Premium Color
- Electric Fireplace in the great room
- Paint Grade Railing with Straight Metal Spindles
- Luxury Vinyl plank throughout the home
- Quartz countertops throughout
- Smart Home Package
- Upstairs laundry
- Upgraded Overhead Garage Door
- 41" Kitchen Upper Cabinets
- LED pot lights throughout
- Triple pane, Low-E argon filled Energy Star rated windows
- Heat recovery ventilator
- High efficiency Gas Furnace and 50 gallon gas fired hot water tank

BUILT TO LAST \ \ **BEDROCKHOMES.CA**

SPEC 2022 - Bedrock Homes Ltd. reserves the right to modify floorplans, renderings, elevations and features in a continuing effort to improve product quality. Floorplans, specifications & prices are subject to change without notice. Errors & omissions exempt.



BEDROCK
HOMES

KENNEDY P

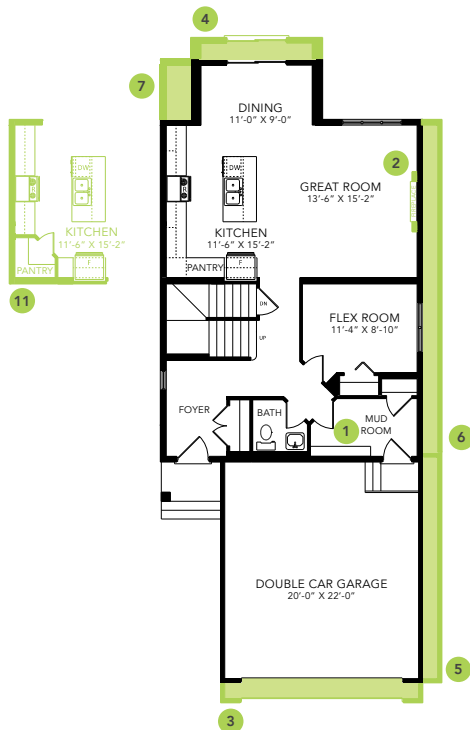
2203 SQ FT
44 Prospect Place



PRESCOTT SHOWHOME

3 Prospect Place, Spruce Grove
587.461.7809
prescott@bedrockhomes.ca

Job # PRC - 0-035340
Lot 43, Block 106, Plan 202-2442



Main Floor
962 SQ FT



Second Floor
1241 SQ FT