



BEDROCK
HOMES

KENNEDY H

2203 SQ FT
16 Prospect Place



PRESCOTT SHOWHOME

3 Prospect Place, Spruce Grove
587-461-7809
prescott@bedrockhomes.ca

Job # PRC - 0-035336
Lot , Block , Plan 202-2442

DETAILS

- Partial WALK-OUT lot backing onto green space/creek
- Steps from the K-9 School, Park and running trails
- 3 Bedrooms, 2,5 bathrooms, den/office/bedroom on the main floor and large bonus room above the garage
- 20x22 Double Attached Garage
- Walk-Out Basement (undeveloped)
- 9' Ceilings on Main and 9' foundation walls
- 6 pc Samsung Stainless Steel Appliances with white high efficiency front load washer/dryer
- Upgraded Kitchen Backsplash
- 4 Piece Ensuite includes 72" Soaker Tub, 48" wide shower and double sinks
- Upgraded Siding to a Premium Color
- Electric Fireplace in great room
- 10 x 16 Rear Deck
- Paint Grade Railing with Straight Metal Spindles on the Main and Second Floor
- Luxury Vinyl plank throughout
- Quartz throughout
- Smart Home Package
- Upstairs laundry
- Corner Pantry
- 41" Kitchen Upper Cabinets
- LED pot lights throughout
- Triple pane, Low-E argon filled Energy Star rated windows
- Heat recovery ventilator
- High efficiency Gas Furnace and 50 gallon gas fired hot water tank

BUILT TO LAST \ \ **BEDROCKHOMES.CA**

SPEC 2022 - Bedrock Homes Ltd. reserves the right to modify floorplans, renderings, elevations and features in a continuing effort to improve product quality. Floorplans, specifications & prices are subject to change without notice. Errors & omissions exempt.



BEDROCK
HOMES

KENNEDY H

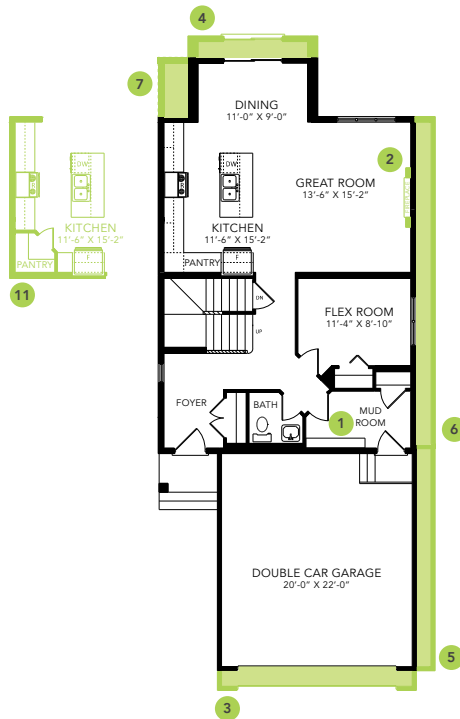
2203 SQ FT
16 Prospect Place



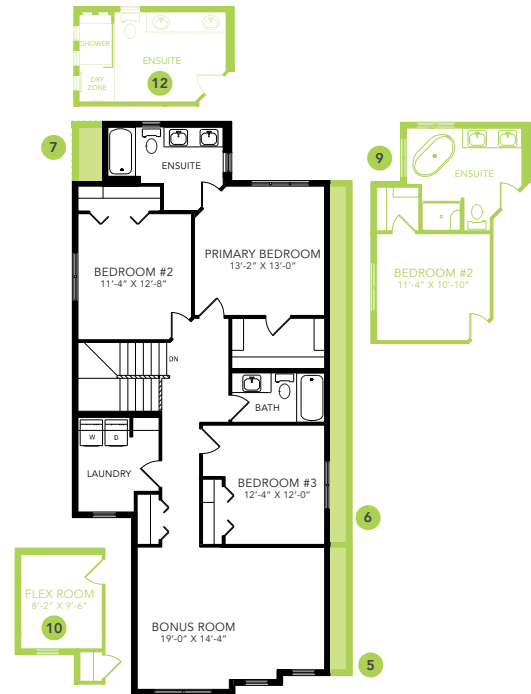
PRESCOTT SHOWHOME

3 Prospect Place, Spruce Grove
587-461-7809
prescott@bedrockhomes.ca

Job # PRC - 0-035336
Lot , Block 106, Plan 202-2442



Main Floor
962 SQ FT



Second Floor
SQ FT