



**BEDROCK**  
HOMES

# RUBY B

1928 SQ FT  
5 Prospect Place



## **PRESCOTT SHOWHOME**

3 Prospect Place, Spruce Grove  
587.461.7809  
prescott@bedrockhomes.ca

Job # PRC - 0-035334  
Lot 3, Block 106, Plan 202-2442

## **DETAILS**

- South Facing Backyard! No neighbours at the Back!
- Steps from the K-9 School, Park and running trails
- 3 Bedrooms, 2.5 bathrooms and bonus room upstairs
- 18 x 22 Attached Double Car Garage
- 9' Ceilings on Main and 9' foundation walls
- Dual sinks in the ensuite
- 6 pc Samsung Stainless Steel Appliances with white high efficiency front load washer/dryer
- Upgraded Kitchen Backsplash
- Large Walk-in Closet
- Upgraded Siding to a Premium Color
- Electric Fireplace in the great room
- Direct access to laundry room from the primary bedroom
- Paint Grade Railing with Straight Metal Spindles
- Luxury Vinyl plank throughout the home
- Quartz countertops throughout
- Smart Home Package
- Corner kitchen with large square island
- Upgraded Overhead Garage Door
- 41" Kitchen Upper Cabinets
- LED pot lights throughout
- Triple pane, Low-E argon filled Energy Star rated windows
- Heat recovery ventilator
- High efficiency Gas Furnace and 50 gallon gas fired hot water tank
- Side Entry

RUBY B

BUILT TO LAST \\ **BEDROCKHOMES.CA**

SPEC 2022 - Bedrock Homes Ltd. reserves the right to modify floorplans, renderings, elevations and features in a continuing effort to improve product quality. Floorplans, specifications & prices are subject to change without notice. Errors & omissions exempt.

# RUBY B

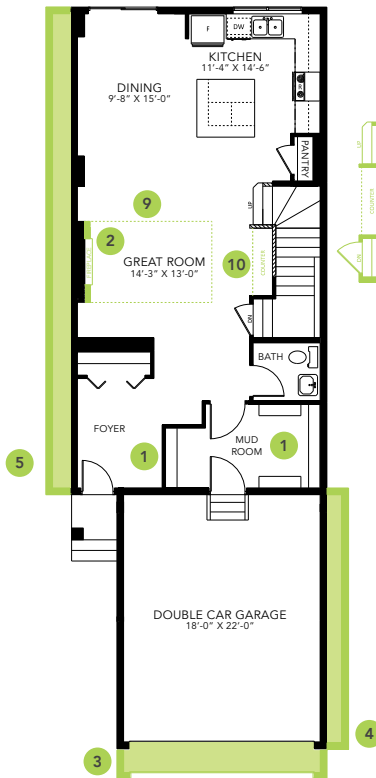
1928 SQ FT  
5 Prospect Place



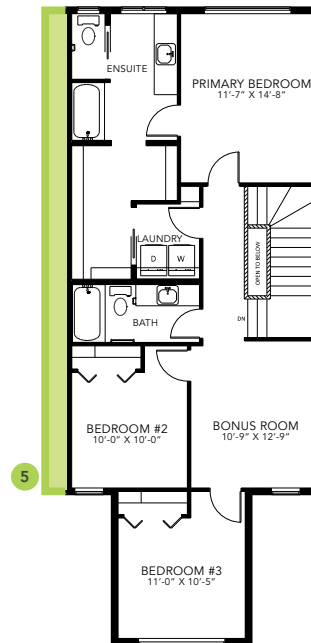
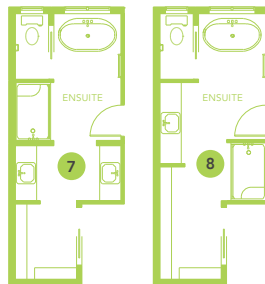
## PRESCOTT SHOWHOME

3 Prospect Place, Spruce Grove  
587.461.7809  
prescott@bedrockhomes.ca

Job # PRC - 0-035334  
Lot 3, Block 106, Plan 202-2442



**Main Floor**  
924 SQ FT



**Second Floor**  
1004 SQ FT



RUBY B