



**BEDROCK**  
HOMES

# KENNEDY B

2203 SQ FT  
1 Prospect Place



## PRESCOTT SHOWHOME

3 Prospect Place, Spruce Grove  
587.461.7809  
prescott@bedrockhomes.ca

Job # PRC - 0-035333  
Lot 1, Block 106, Plan 202-2442

## DETAILS

- Corner Lot! South Facing Backyard! No neighbours at the Back!!
- Steps from the K-9 School, Park and running trails
- Den/office on the Main Floor with 3 Bedrooms, 2.5 bathrooms and large bonus room upstairs
- 41" Kitchen Upper Cabinets
- 22x22 Attached Double car Garage
- 9' Ceilings on Main Floor
- 6 pc Samsung Stainless Steel Appliances with white high efficiency front load washer/dryer
- Upgraded Kitchen Backsplash
- Large central island
- Upgraded Siding to a Premium Color
- Electric Fireplace in the great room
- Dual sinks in the ensuite
- Paint Grade Railing with Straight Metal Spindles
- Luxury Vinyl plank throughout the home
- Quartz countertops throughout
- Smart Home Package
- Upstairs laundry
- High efficiency Gas Furnace and 80 gallon electric hot water tank
- LED pot lights throughout
- Triple pane, Low-E argon filled Energy Star rated windows
- Heat recovery ventilator

BUILT TO LAST \\ **BEDROCKHOMES.CA**

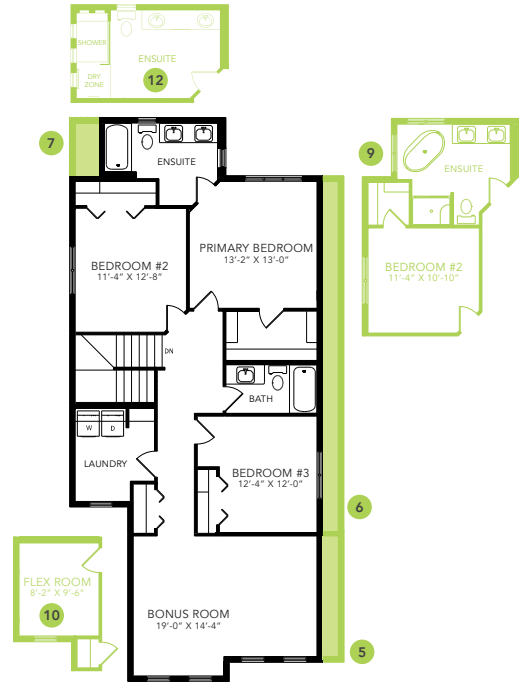
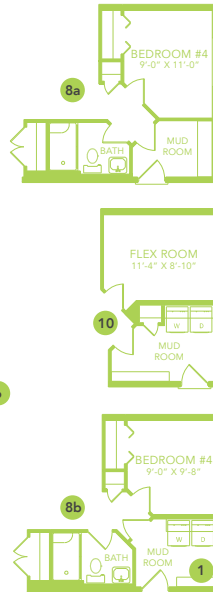
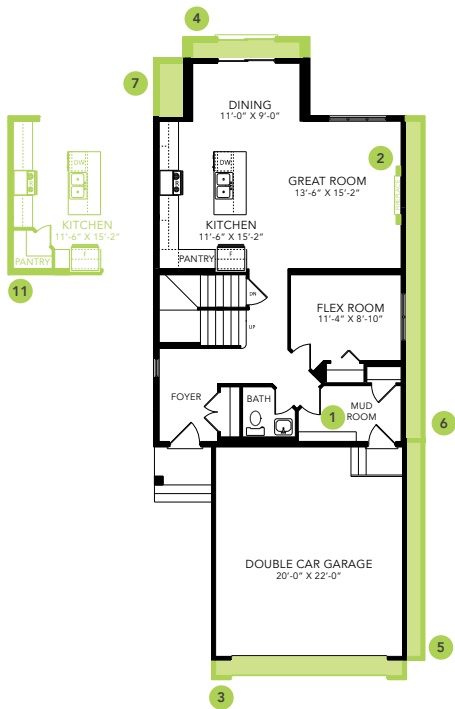
SPEC 2022 - Bedrock Homes Ltd. reserves the right to modify floorplans, renderings, elevations and features in a continuing effort to improve product quality. Floorplans, specifications & prices are subject to change without notice. Errors & omissions exempt.



## PRESCOTT SHOWHOME

3 Prospect Place, Spruce Grove  
587.461.7809  
prescott@bedrockhomes.ca

Job # PRC - 0-035333  
Lot 1, Block 106, Plan 202-2442



KENNEDY B