



**BEDROCK**  
HOMES

# RUNDLE H

1430 SQ FT  
3711-4th Street



## MAPLE CREST SHOWHOME

451 - 37 Avenue NW, Edmonton  
587-521-7744  
maplecrest@bedrockhomes.ca

Job # MPC 4527  
Lot , Block , Plan 192-2185

## DETAILS

- Modern 3 bedroom, 2.5 bath, with a 13' high ceiling in the great room.
- Bright triple pane windows in the great room with a stunning linear electric fireplace, a perfect place to entertain.
- Overlook your great room from your kitchen and dining area with a beautiful split-level design. This room division is created with a white and silver metal spindle railing.
- Stunning designer kitchen featuring dark brown cabinetry, white quartz counter tops, and white subway tile backsplash.
- Includes a full Samsung stainless steel appliance package.
- Kitchen sink is a stainless steel, double compartment undermount with pull-down handle sprayer.
- Convenient second floor laundry with ample integrated storage space and linen closet.
- Attractive, high quality, luxury vinyl flooring on the main floor, second floor laundry, and bathrooms. This easy to maintain flooring is water-proof and stain resistant.
- Primary suite includes a large three-piece ensuite, walk-in closet, and bright street facing windows.
- Pot lights with LED bulbs in all light fixtures - maximizes energy savings by providing optimal light output for the lowest energy usage.
- 20' x 22' rear concrete parking pad.

# RUNDLE H

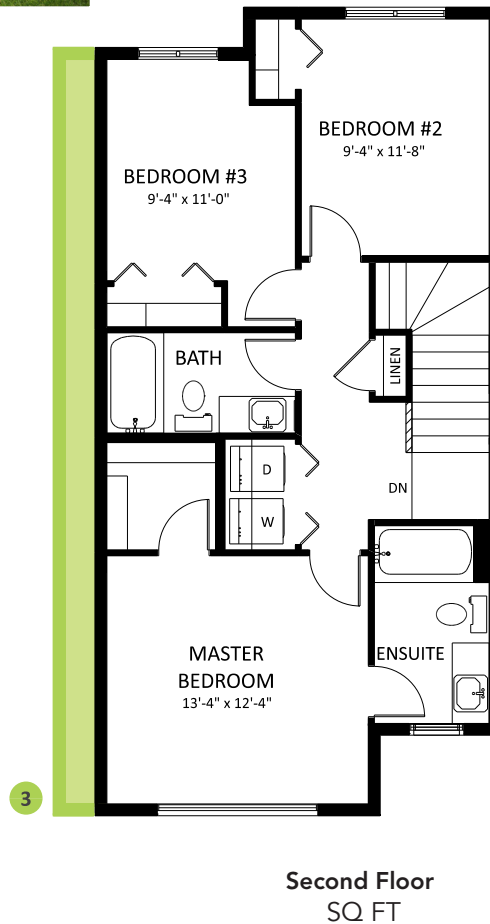
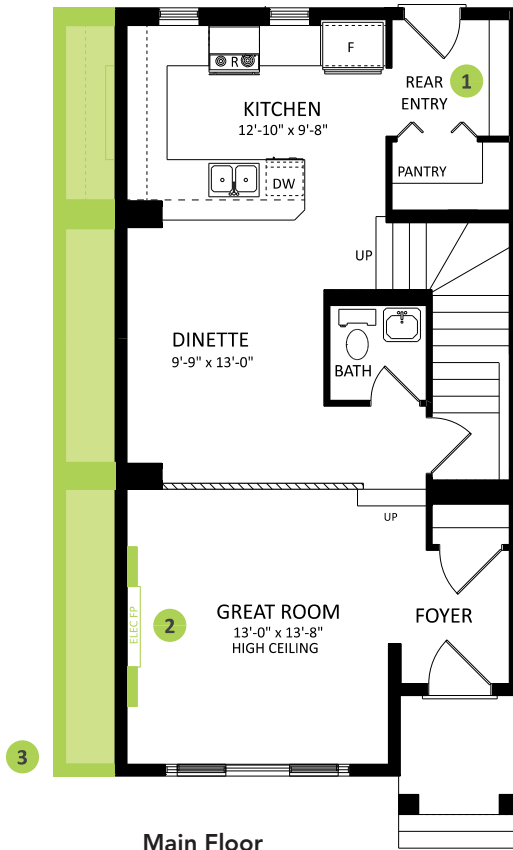
1430 SQ FT  
3711-4th Street



## SHOWHOME

451 - 37 Avenue NW, Edmonton  
587-521-7744  
maplecrest@bedrockhomes.ca

Job # MPC 4527  
Lot , Block 4, Plan 192-2185



RUNDLE H