



BEDROCK
HOMES

CASCADE P

1601 SQ FT
403-37 Ave



MAPLE CREST SHOWHOME

451 - 37 Avenue NW, Edmonton
587-521-7744
maplecrest@bedrockhomes.ca

Job # MPC-4524
Lot , Block , Plan 192-2185

DETAILS

- Modern 3 bedroom, 2.5 bathroom home featuring an open concept main floor.
- Designer linear kitchen with an open eating bar, cabinet pantry, and a walk through mudroom to the rear entry.
- Includes a full Samsung Appliance Package.
- Kitchen is outfitted with bright white cabinetry, grey quartz counter tops, and white subway tile backsplash.
- The great room features a bright street-facing window and a stunning linear electric fireplace to keep you and your guests warm.
- Both entries feature convenient built-in benches and plenty of hanging storage space.
- Beautiful white metal spindle railings featured in the staircase going up to the second floor.
- Primary Suite has a large bedroom with a dual walk through closet, and a 3-piece ensuite with his and her sinks.
- Convenient second floor laundry with ample storage space and a linen closet.
- Attractive, high quality, luxury vinyl flooring on the main floor, second floor laundry, and bathrooms. This easy to maintain flooring is water-proof and stain resistant.
- Pot lights with LED bulbs in all light fixtures - maximizes energy savings by providing optimal light output for the lowest energy usage.
- 20'x 22' concrete garage pad.

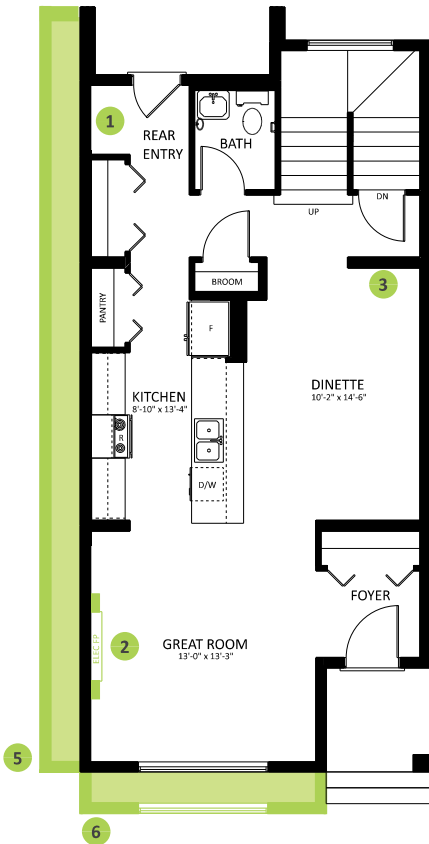
CASCADE P



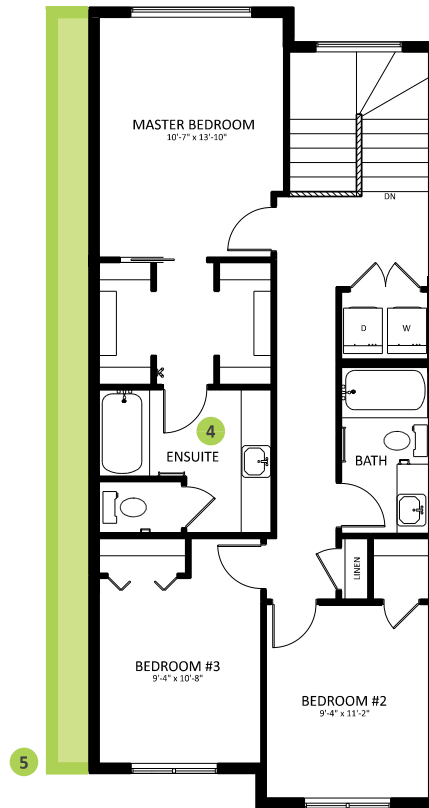
MAPLE CREST SHOWHOME

451 - 37 Avenue NW, Edmonton
587-521-7744
maplecrest@bedrockhomes.ca

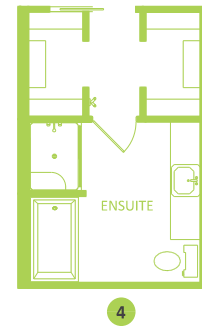
Job # MPC-4524
Lot , Block 4, Plan 192-2185



Main Floor
782 SQ FT



Second Floor
SQ FT



CASCADE P