

1601 SQ FT
4032 - 3 St NW



MAPLE CREST SHOWHOME

523 - 37 Avenue NW, Edmonton

587.524.2160

maplecrest@bedrockhomes.ca

Job # MPC-0-034512
Lot 61, Block 12, Plan 162 3032

DETAILS

- Bright and welcoming 3 bedroom, 2.5 bath home with large living room, spacious dinette, and kitchen. You can retreat and relax in your big ensuite with his and her closets.
- Six energy rated Samsung appliances included - 4 stainless steel kitchen appliances and white finish front load washer and dryer.
- Adapt with the modern technology with your Brilliant Home System (Alexa built-in), Ring video doorbell, Weiser Halo Wi-Fi Smart Lock with touch screen and Ecobee thermostat, with the ability to communicate remotely through it's own app for maximum efficiency.
- 20' x 22' concrete garage pad includes electrical rough-ins.
- The spacious treated spruce front deck is perfect for holiday decorating.
- Clutter-free kitchen with 41" upper cabinets, smooth action metal drawer hardware with soft-close (no slam) mechanism on all doors and drawers.
- Kitchen sink is a stainless steel, double compartment undermount with pull-down handle sprayer. Customized drip tray underneath the sink.
- Save money on electricity with advanced triple pane low E-Argon filled Energy Star rated windows and doors for high energy efficiency and minimal outside noise.
- High efficient, energy saving LED light bulbs in all light fixtures.
- Low VOC, 1¼" thick, maintenance free quartz counter top in the main kitchen and second floor bathrooms with undermount sink.
- Attractive, high quality, luxury vinyl flooring on the main floor, second floor laundry, and bathrooms. This easy to maintain flooring is water-proof and stain resistant.
- Recessed HDMI box with duplex outlet & two HDMI cables added above fireplace for TV electrical & audio/visual connection.
- Painted basement floor and the removable 5' x 2' dual slider basement windows are wide enough to fit drywall through for future basement development.

1601 SQ FT
4032 - 3 St NW

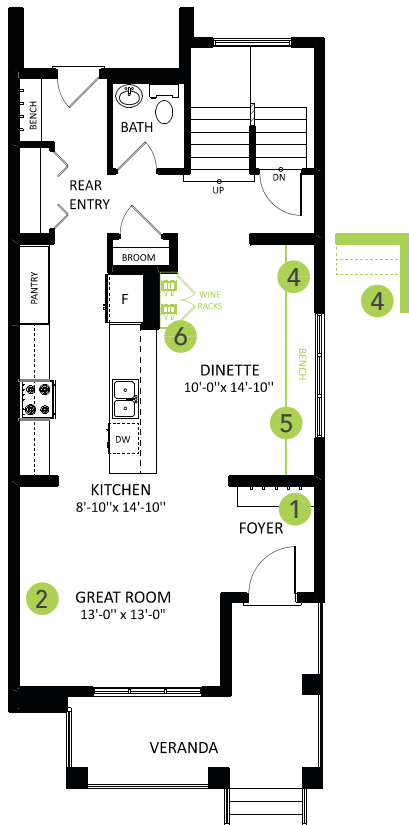


MAPLE CREST SHOWHOME

523 - 37 Avenue NW, Edmonton
587.524.2160
maplecrest@bedrockhomes.ca

Job # MPC-0-034512
Lot 61, Block 12, Plan 162 3032

CASCADE



Main Floor
782 SQ FT



Second Floor
819 SQ FT