



MAPLE CREST SHOWHOME

416 - 42 Avenue NW, Edmonton

587.524.2160

maplecrest@bedrockhomes.ca

Job # MPC-0-034509
Lot 58, Block 12, Plan 162-3032

DETAILS

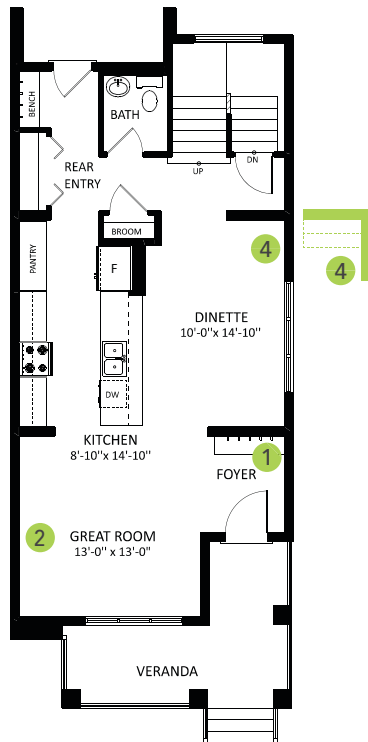
- Contemporary 3 bedroom, 2.5 bath detached garage home with 9" ceiling main floor, spacious dining room, and practical cabinet pantry.
- Front yard landscaping included. A 20' x 22' concrete garage pad includes electrical rough-ins.
- The home welcomes you into a spacious living room with a cozy fireplace. The big picture windows by the stairs to the second floor bring natural light into the home.
- Décor pleasing, easy to maintain high quality, luxury vinyl flooring on the main floor, second floor laundry, and bathrooms. Vinyl flooring is water-proof and stain resistant.
- Six piece appliances included - stainless steel finish dishwasher, top freezer refrigerator with flex zone & twin cooling plus features, over the range microwave, 5-burner ceran top range with oven & quick-steam-clean feature, and Energy Star front loading washer and dryer with advanced moisture drying sensor.
- Advanced triple pane, low E-Argon, Energy Star rated windows and doors for high energy efficiency and minimal outside noise.
- Your home has durable and environmentally advanced treated wooden exterior steps to achieve a homey country feel.
- 2' x 4' wood frost walls reduces thermal bridging (cold transfer) from the ground into basement. Exterior walls and ceilings are vapour sealed.
- Low VOC, 1¼" thick maintenance free quartz counter top in the main kitchen and second floor bathrooms with undermount sink.
- Keep your kitchen clutter-free and organized with the convenient and easy to use pot and pan drawers, and 41" upper cabinets throughout the kitchen.
- Equipped with a carbon monoxide detector, high efficiency 2-stage furnace, humidifier and HRV (Heat Recovery Ventilation) system - provides fresh air and improve climate control while saving energy by reducing heating requirements.
- 10 year structural warranty. Coverage for structural defects such as frame and foundation.



MAPLE CREST SHOWHOME

416 - 42 Avenue NW, Edmonton
587.524.2160
maplecrest@bedrockhomes.ca

Job # MPC-0-034509
Lot 58, Block 12, Plan 162-3032



Main Floor
782 SQ FT



Second Floor
819 SQ FT