

Bailey B

1742 SQ FT

448 41 Avenue NW



- 4 bedrooms, 2.5 bathroom, bonus room
- Vinyl plank flooring on main floor and bathrooms
- Quartz throughout
- Railing on the main floor
- 9' ceilings on main floor
- 41" cabinets raised to the bulkhead
- Nest Thermostat
- Widen garage by 2'
- Tiled shower in the ensuite
- Walk-in close in master bedroom and bedroom #2
- Pre-cast concrete front steps
- Rough-in plumbing in the basement for future development
- Appliance package (6 Maytag/Frigidaire appliances, stainless steel in the kitchen)

Maple Crest Showhome

416 42 Avenue NW, Edmonton, AB.

587.521.7744

apopa@bedrockhomes.ca

Job # MPC-0-034224 Lot 28, Block 17, Plan 162-3032

Notes:

bedrockhomes.ca

VISIT US AT ANY OF OUR SHOWHOMES!

Monday - Thursday 3-8pm, Weekends & Holidays 12-5PM



Bailey B

1742 SQ FT

448 41 Avenue NW



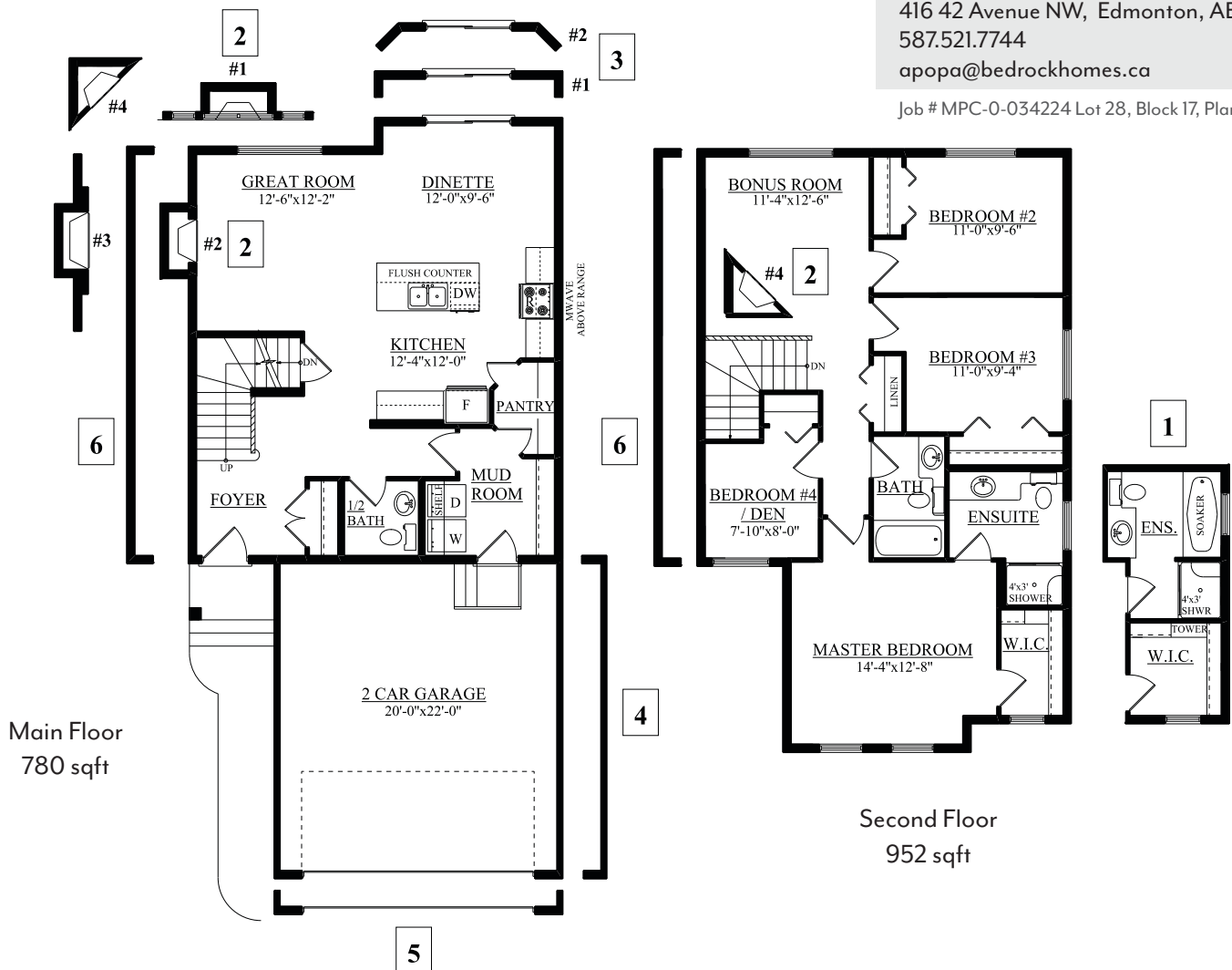
Maple Crest Showhome

416 42 Avenue NW, Edmonton, AB.

587.521.7744

apopa@bedrockhomes.ca

Job # MPC-0-034224 Lot 28, Block 17, Plan 162-3032



bedrockhomes.ca

VISIT US AT ANY OF OUR SHOWHOMES!

Monday - Thursday 3-8pm, Weekends & Holidays 12-5PM

