

The Morrison B

1724 SQ FT

4116 5 Street



- 3 bedrooms/2.5 bathroom/ bonus room
- Vinyl plank flooring on main floor and bathrooms
- Quartz throughout
- Railing on the main floor
- 9' ceilings on main floor
- 41" cabinets raised to the bulkhead
- Nest Thermostat
- Double sink in ensuite
- Tiled shower in the ensuite
- Walk-in closet in master bedroom and bedroom #2
- Pre-cast concrete front steps
- Rough-in plumbing in the basement for future development
- Appliance package (6 Maytag/Frigidaire appliances, stainless steel in the kitchen)

Maple Crest Showhome

416 42 Avenue, Edmonton, AB.

587.521.7744

maplecrest@bedrockhomes.ca

Job # MPC-0-034216 Lot 138, Block 6, Plan 162-3032

Notes:

bedrockhomes.ca

VISIT US AT ANY OF OUR SHOWHOMES!

Monday - Thursday 3-8pm, Weekends & Holidays 12-5PM



The Morrison B

1724 SQ FT

4116 5 Street



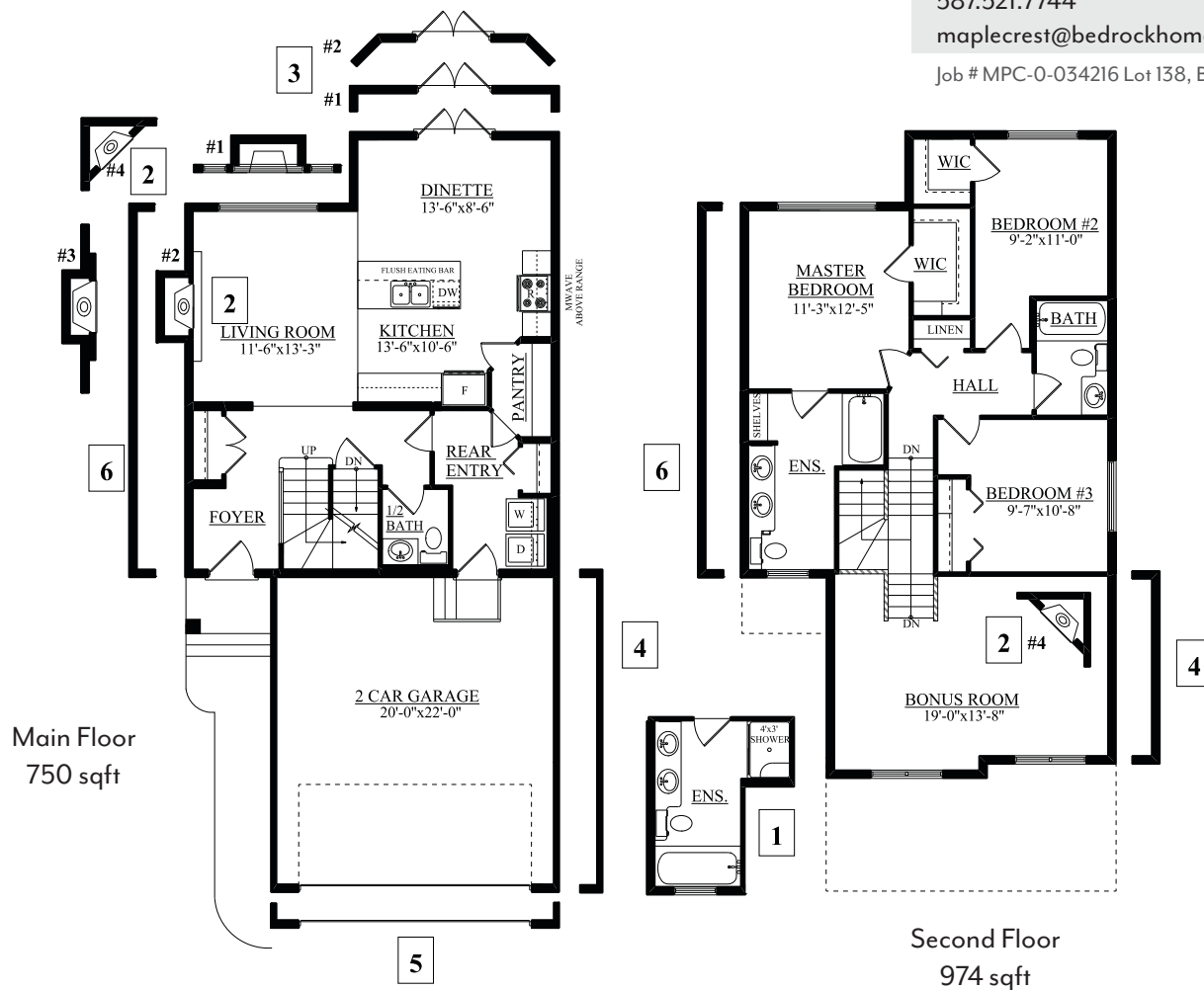
Maple Crest Showhome

416 42 Avenue, Edmonton, AB.

587.521.7744

maplecrest@bedrockhomes.ca

Job # MPC-0-034216 Lot 138, Block 6, Plan 162-3032



bedrockhomes.ca

VISIT US AT ANY OF OUR SHOWHOMES!

Monday - Thursday 3-8pm, Weekends & Holidays 12-5PM

