

The Seville B

2016 SQ FT

447-42 Ave. NW



- 3 Bedroom, 2.5 bath, bonus room
- Second floor laundry
- Garage with extra 11x11 storage space
- 4 piece bathroom
- 2' added to great room length
- Glass panels to garage door
- 9' main floor ceiling
- Metal spindled railing throughout
- Gas fireplace c/w stone surround
- Laminate flooring on main floor
- Tile flooring in all bathrooms, mudroom and laundry
- Build-in benches in mudroom
- Cabinets to the ceiling
- Quartz countertops in the kitchen

Maple Crest Showhome

416 - 42 Avenue NW, Edmonton, AB.

587.521.7744

maplecrestsales@bedrockhomes.ca

Job # MPC-0-033976 Lot 4, Block 6, Plan 162-3032

Notes:

bedrockhomes.ca

VISIT US AT ANY OF OUR SHOWHOMES!

Monday - Thursday 3-8pm, Weekends & Holidays 12-5PM



The Seville B

2016 SQ FT

447-42 Ave. NW



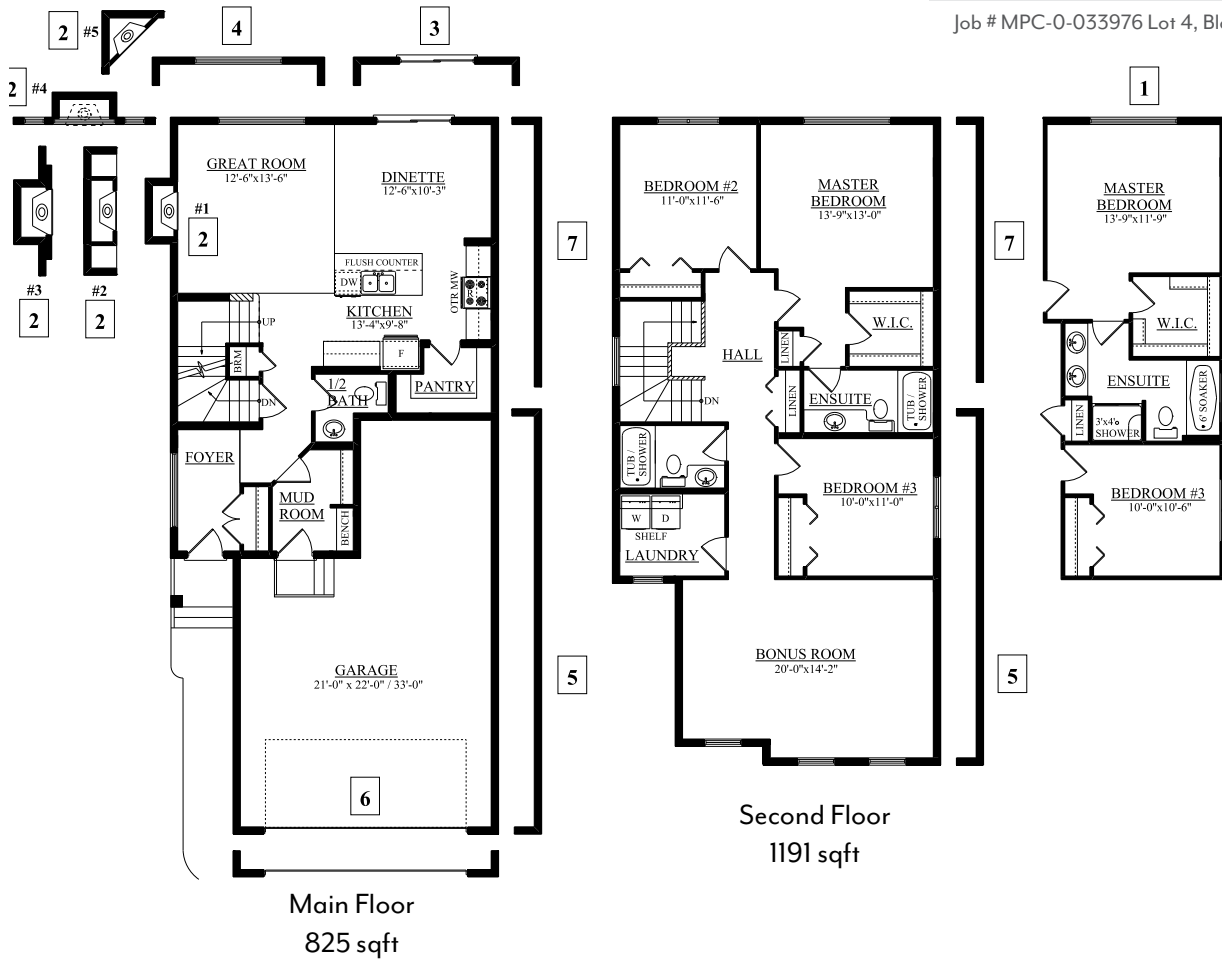
Maple Crest Showhome

416 - 42 Avenue NW, Edmonton, AB.

587.521.7744

maplecrestsales@bedrockhomes.ca

Job # MPC-0-033976 Lot 4, Block 6, Plan 162-3032



bedrockhomes.ca

VISIT US AT ANY OF OUR SHOWHOMES!

Monday - Thursday 3-8pm, Weekends & Holidays 12-5PM

