

# Birk (Wayde)

1352 SQ FT

4419-6 Street NW



- 3 bedrooms, 2.5 bathrooms
- Laminate flooring on main floor
- Tile flooring in all bathrooms and mudroom
- Quartz countertops in the kitchen
- Cabinets raised to ceiling
- Railing with metal spindles on main floor
- Full height tile backsplash
- Upgraded light package
- Complete fence
- Kitchen island with breakfast bar

## Maple Crest Showhome

4407-6 Street NW, Edmonton, AB.

587.524.2160

apopa@bedrockhomes.ca

Job # MPC-0-033808 Lot 59, Block 11, Plan 152 3661

Notes:

---

---

---

---

---

---

---

**bedrockhomes.ca**

VISIT US AT ANY OF OUR SHOWHOMES!

Monday - Thursday 3-8pm, Weekends & Holidays 12-5PM



# Birk (Wayde)

1352 SQ FT

4419-6 Street NW



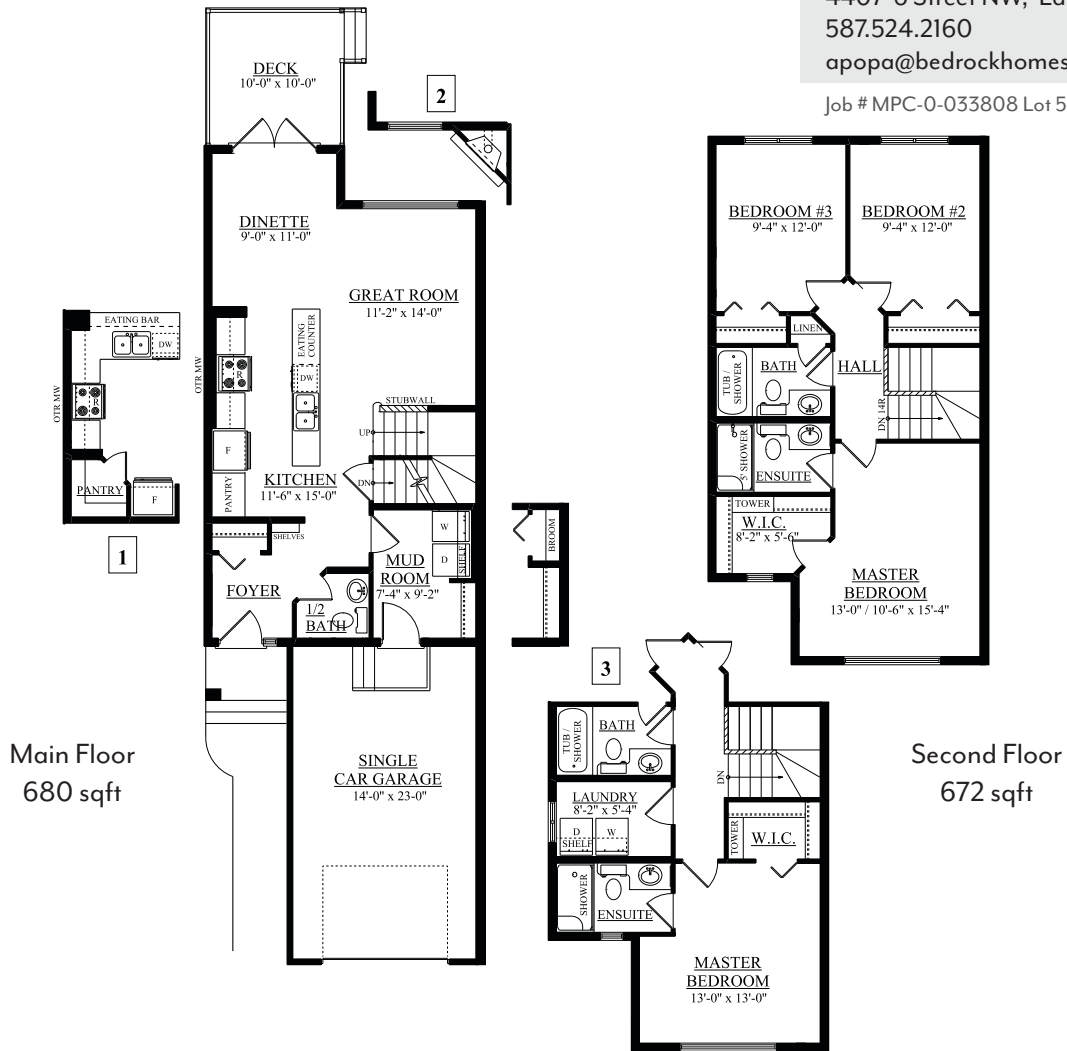
## Maple Crest Showhome

4407-6 Street NW, Edmonton, AB.

587.524.2160

apopa@bedrockhomes.ca

Job # MPC-0-033808 Lot 59, Block 11, Plan 152 3661



[bedrockhomes.ca](http://bedrockhomes.ca)

VISIT US AT ANY OF OUR SHOWHOMES!

Monday - Thursday 3-8pm, Weekends & Holidays 12-5PM

