

## The Lindale (Camden)

1396 SQ FT

4445-6A St. NW



- 6 piece stainless steel appliances
- Blinds
- Granite in kitchen
- Upgraded maple cabinets
- Hardwood and tile flooring throughout main floor
- Kitchen island with flush countertops
- Landscaping, both front and back, deck, and fence
- Crown moulding to kitchen cabinets

### Maple Crest Showhome

623 + 625-40 Ave NW, Edmonton, AB.

587.524.2160

maplecrestsales@bedrockhomes.ca

Job # MPC-0-033798 Lot 25, Block 11, Plan 152-3661

Notes:

---

---

---

---

---

---

---

---

---

---

**bedrockhomes.ca**

VISIT US AT ANY OF OUR SHOWHOMES!

Monday - Thursday 3-8pm, Weekends & Holidays 12-5PM



# The Lindale (Camden)

1396 SQ FT

4445-6A St. NW



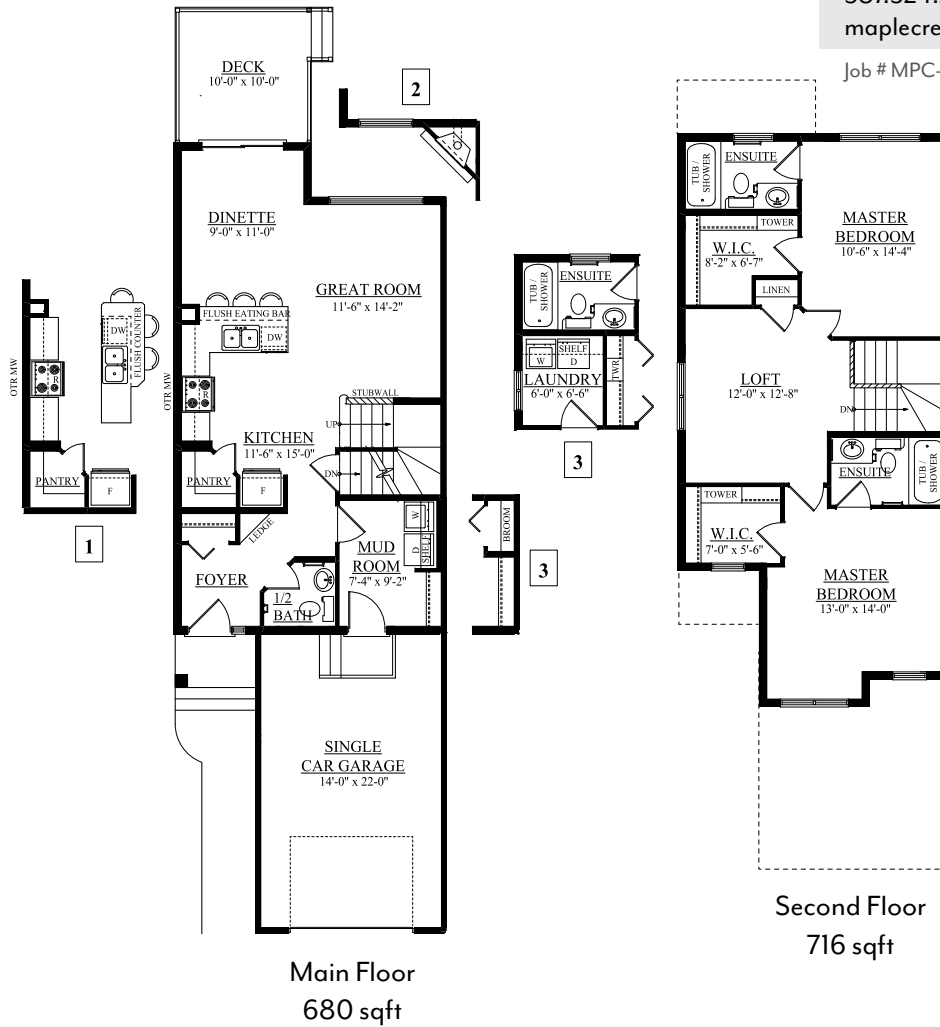
## Maple Crest Showhome

623 + 625-40 Ave NW, Edmonton, AB.

587.524.2160

maplecrestsales@bedrockhomes.ca

Job # MPC-0-033798 Lot 25, Block 11, Plan 152-3661



[bedrockhomes.ca](http://bedrockhomes.ca)

VISIT US AT ANY OF OUR SHOWHOMES!

Monday - Thursday 3-8pm, Weekends & Holidays 12-5PM

