

# Rylee B at 147 Larch Crescent

BED	BATH	SQ FT	HOME STYLE	GARAGE TYPE
3	2.5	1989	FRONT ATTACHED GARAGE HOME	DOUBLE ATTACHED



AVAILABLE DEC. 2023

BLOCK: 1 LOT: 77

STAGE: 2 JOB: WDB-0-035276

## COMMUNITY



## SHOWHOME ADDRESS

Single Family Home  
143 Larch Cres

## SHOWHOME HOURS

Monday - Thursday  
from 3 - 8PM  
Weekend and  
Holidays  
from 12 - 5PM

## CONTACT

Bruno Ziger  
780.612.5455

## Model Features

- Our Rylee model is a gorgeous home that includes 3 bedrooms, 2.5 bathrooms, second floor bonus room, walk through pantry and more!
- Modern, contemporary low maintenance kitchen featuring cabinets to ceiling, tiled backsplash, pot & pan drawers and double undermounted sink set in quartz.

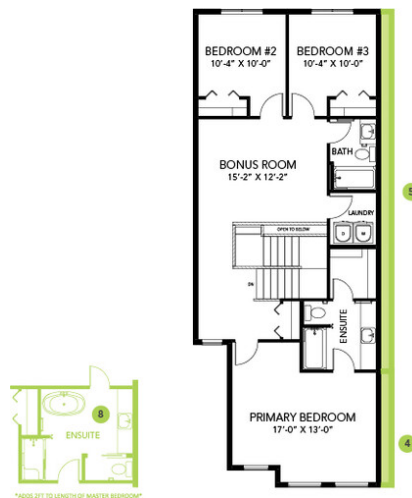
- The great room and dinette share an open area for easy flow between them and the kitchen. Included is an electric fireplace creating a lovely space for family and friends.
- Upstairs you'll find a spacious central bonus area creating added privacy between the primary suite and secondary bedrooms.
- Front facing primary bedroom with large walk in closet, and private ensuite.
- Secondary bedrooms are at the back of the home allowing more privacy between them and the primary suite.
- Conveniently equipped with second floor laundry.
- Included Amazon Echo Hub Smart Home package. Control lights, front door lock, garage door and thermostat all on the panel or a convenient phone app.
- This home would not be complete without its 18' by 24' front attached double car garage.

## Floor Plans

MAIN FLOOR



SECOND FLOOR



LEGAL BASEMENT SUITE

