

Elena K at 2536 208 Street NW

Get Cash Back

BED	BATH	SQ FT	HOME STYLE
3	2.5	2088	FRONT ATTACHED GARAGE HOME

GARAGE TYPE

DOUBLE ATTACHED



QUICK POSSESSION

BLOCK: 1

STAGE: 10B

LOT: 145

JOB: UPL-0-035206

COMMUNITY



SHOWHOME
ADDRESS

Single Family
Home
2504 - 208 Street
NW

SHOWHOME
HOURS

Monday - Thursday
from 3 - 8PM
Weekend and
Holidays
from 12 - 5PM

CONTACT

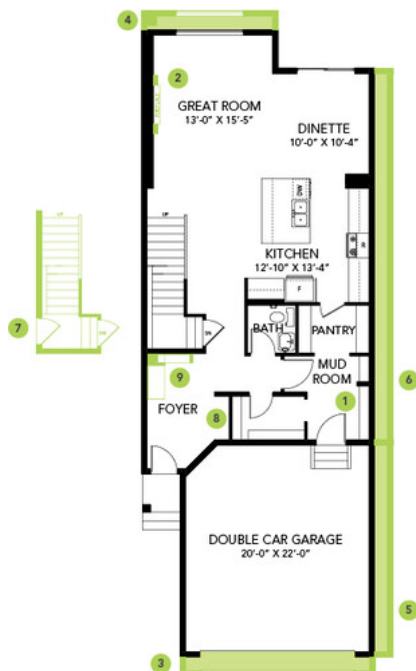
Mike Marsh
587.906.8970

Model Features

- Double front attached garage home with 3 bedrooms, 2.5 bathrooms, bonus room, large front and rear entry and walk-through pantry.
- Open floorplan in Great Room, dining, and kitchen area, featuring 9' ceilings and a separate side entry to the 9' basement.
- Durable and stylish luxury vinyl plank flooring on the main floor, bathrooms and laundry room. Advanced wear and stain protection carpet with 35oz. weight and 8lb underlay on the second floor.
- Modern, contemporary, low maintenance kitchen featuring 41" upper cabinets to ceiling.
- Complete 6-piece appliance package. Included Stainless Steel Samsung kitchen appliances and a white front-load washer and dryer.
- Upgraded spindle railing on both floors offers optimal lighting and a spacious feel throughout.
- Triple pane Low E Argon gas-filled *Energy Star* rated windows contributing to increased energy efficiency and outside noise reduction.
- 50" linear Electric fire and ice linear fireplace in great room with timer & colour control.
- Tiled wall shower with acrylic base in the ensuite.
- Modern smart home technology package includes Smart Home module, Smart thermostat, Smart video doorbell & Smart front door lock.
- Weather-resistant precast concrete exterior steps that require no maintenance, and exterior walls and ceilings are vapor sealed.

Floor Plans

MAIN FLOOR



SECOND FLOOR



LEGAL BASEMENT SUITE

