

# Priya H at 3637 5A AVE SW

BED	BATH	SQ FT	HOME STYLE
4	3	2218	FRONT ATTACHED GARAGE HOME

GARAGE TYPE

DOUBLE ATTACHED



BLOCK: 16

STAGE: 32B

LOT: 37

JOB: CHH-0-035432

COMMUNITY



SHOWHOME  
ADDRESS

Single Family  
Home with Front  
Attached Garage  
328 – 40 Street SW

Single Family  
Home with Rear  
Detached Garage  
268 Charlesworth  
Drive SW

SHOWHOME  
HOURS

Monday - Thursday  
from 3 - 8PM  
Weekend and  
Holidays  
from 12 - 5PM

CONTACT

Brian Tate  
587.521.5869

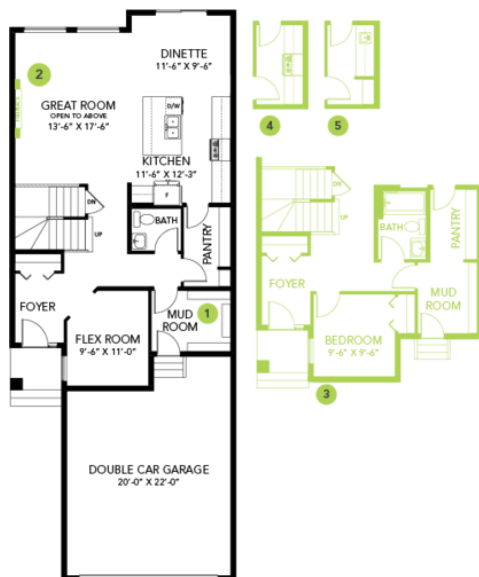
## Model Features

- A stunning open to below floorplan.
- Located on a traditional lot, south facing backyard!

- Built with a main floor bedroom/flex room and full bathroom, spacious living room, dinette, and central kitchen with a walk-through pantry, and 41" soft close upper cabinets.
- Every Bedrock home comes complete with a modern smart home technology system (Smart Home Hub), Ecobee thermostat, Ring video doorbell & Weiser Halo Wi-Fi Smart keyless lock with touch screen.
- Spindle railing on the stairs and upper hall to create an open feel from the main floor to upper level.
- Built with a 5-piece primary ensuite with upgraded stand-up shower, dual sinks and a soaker tub!
- Double compartment stainless steel under mount kitchen sink, complete with a chrome finish faucet with pulldown sprayer, and 1.5gpm aerator.
- All Bedrock homes include a complete appliance package that includes: Stainless Steel kitchen appliances including a 28cu. Ft. French door fridge with bottom pull out freezer and ice machine, a 5 burner range, an OTR microwave and a built-in dishwasher. The Laundry is high efficiency front load washer and dryer in white.
- 50" Linear Ortech LED electric fireplace.
- Energy efficient features include triple pane, Low-E, argon gas filled, Energy Star rated windows, heat recovery ventilator, 96.5% efficient and direct vented furnace, 80gal hot water tank and Bedrock's "Hotbox" system.
- Quartz counters in the kitchen and all bathrooms. Luxury Vinyl Plank flooring throughout the main floor and all "wet" areas.
- Advanced wear and stain protection carpet w/35oz. weight and 8 lbs. under pad.
- Painted basement floor and removable 5'x 2' dual slider.
- Basement windows are wide enough to drywall through for future basement development.
- Includes community address plaque.
- All duct work is cleaned prior to moving in.

## Floor Plans

MAIN FLOOR



SECOND FLOOR

