

# Sasha F at 731 Mattson Drive SW

BED	BATH	SQ FT	HOME STYLE	GARAGE TYPE
3	2.5	1564	LANED HOME	REAR DETACHED



QUICK POSSESSION

BLOCK:	4	LOT:	15
STAGE:	1	JOB:	PER-0-035644

COMMUNITY



SHOWHOME ADDRESS

Single Family Home with Front Attached Garage

6323 27 Ave

Single Family Laned Home

744 Mattson Dr

SHOWHOME HOURS

Monday - Thursday  
from 3 - 8PM

Weekend &  
Holidays  
from 12 - 5PM

CONTACT



Brian Tate

587.801.7285

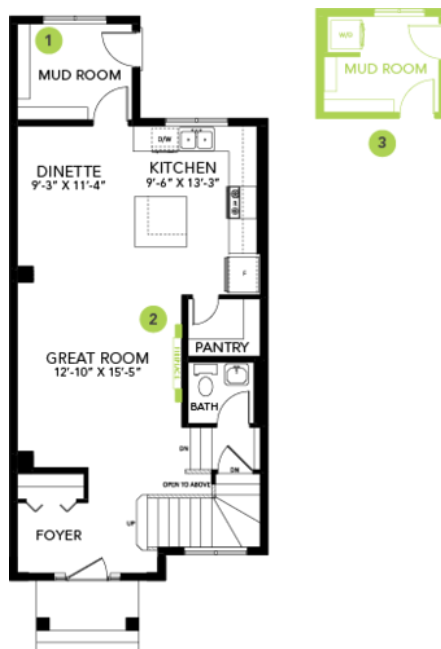
## Model Features

- Beautiful open concept main floor with L-shaped kitchen at the back of the house.
- Second floor has a central bonus room, 3 spacious bedrooms, and 2 full bathrooms.
- Ample storage space in the mudroom.

- The stub wall was upgraded to a spindle railing on the main floor.
- Sleek linear electric fireplace in the great room.
- Primary ensuite comes with dual sinks and a shower with sliding glass doors.
- Every Bedrock Home comes complete with a modern smart home technology system (Smart Home Hub), Ecobee thermostat, Video doorbell & Weiser Halo Wi-Fi Smart keyless lock with touch screen.
- All LED pot lights were upgraded to 5000k white light.
- Double compartment stainless steel undermount kitchen sink, complete with a chrome finish faucet with pull down sprayer and 1.5gpm aerator.
- This Bedrock Home includes a complete appliance package: Stainless Steel kitchen appliances including a 28 cu. Ft. French door fridge with bottom pull out freezer and ice machine, a 5 burner range, an OTR microwave and a built-in dishwasher.
- Energy efficient features include dual pane, Low-E, argon gas filled, Energy Star rated windows, heat recovery ventilator, 96.5% efficient and direct vented furnace, 80gal hot water tank.
- Quartz countertops in the kitchen and all bathrooms.
- Luxury Vinyl Plank flooring throughout the main floor and all "wet" areas.
- Advanced wear and stain protection carpet w/ 35 oz. weight and 8 lbs. under pad.
- Basement windows are wide enough to fit drywall through for future basement development.
- All ductwork is cleaned prior to moving in.

## Floor Plans

MAIN FLOOR



SECOND FLOOR

