

Ruby K at 3289 Kulay Way SW

BED	BATH	SQ FT	HOME STYLE
3	2.5	1928	FRONT ATTACHED GARAGE HOME

GARAGE TYPE

DOUBLE ATTACHED



QUICK POSSESSION

BLOCK: 10

STAGE: 43

LOT: 91

JOB: KWK-0-035386

COMMUNITY



SHOWHOME
ADDRESS

Single Family
Home
3411 Kulay Green
SW

SHOWHOME
HOURS

Monday - Thursday
from 3 - 8PM
Weekend and
Holidays
from 12 - 5PM

CONTACT

Craig Watson
587-521-6580

Model Features

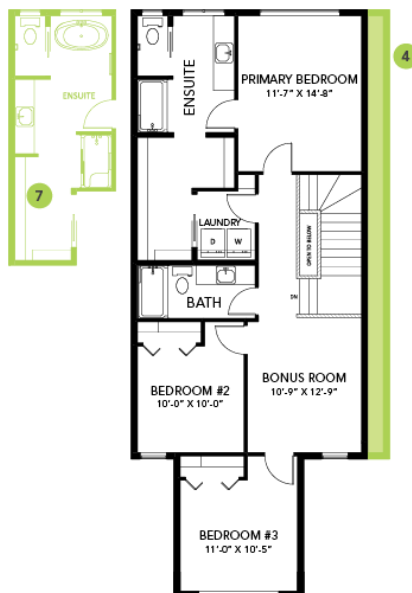
- Walking distance to Joey Moss K-9 School and Close access to Joan Carr K-9 Catholic School.
- Every Bedrock Home comes complete with a modern smart home technology system (Smart Home Hub), Ecobee thermostat, video doorbell & Weiser Halo Wi-Fi Smart keyless lock with touch screen.
- This Bedrock homes includes a complete appliance package that features: Stainless Steel kitchen appliances including a 28 cu. Ft. French door fridge with bottom pull out freezer and ice machine, a 5 burner range, an OTR microwave and a built-in dishwasher.
- Spindle railing on the stairs and upper hall to create an open feel from main floor to upper level.
- 50" Linear Ortech LED electric fireplace complete with media conduit and power above to mount a TV with no wires visible.
- Primary bedroom features a huge walk-in closet that brings you into the laundry room.
- Primary ensuite bathroom includes dual sinks and a walk-in shower with a large window for natural light.
- Energy efficient features include Low-E, argon gas filled, Energy Star rated windows, heat recovery ventilator, 96.5% efficient and direct vented furnace, 80gal hot water tank and Bedrock's "Hotbox" system.
- White soft close cabinet doors and drawers throughout, and 41' upper cabinets in the kitchen.
- White quarts counter tops with under mount sinks in kitchen and baths.
- Light grey Luxury Vinyl Plank flooring throughout the main floor, all bathrooms, and the laundry room.
- Light grey stain-proof Carpeting by Mohawk - Portico Collection.

Floor Plans

MAIN FLOOR



SECOND FLOOR



LEGAL BASEMENT SUITE

