

Daya P at 3461 Kulay Green SW

Get Cash Back

BED	BATH	SQ FT	HOME STYLE	GARAGE TYPE
3	2.5	1501	LANED HOME	REAR DETACHED



QUICK POSSESSION

BLOCK: 20

STAGE: 44

LOT: 29

JOB: KWK-0-035397

COMMUNITY



SHOWHOME
ADDRESS

Single Family
Home
3411 Kulay Green
SW

SHOWHOME
HOURS

Monday - Thursday
from 3 - 8PM
Weekend and
Holidays
from 12 - 5PM

CONTACT

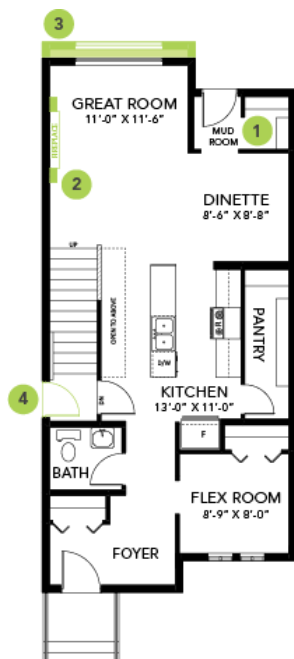
Craig Watson
587-521-6580

Model Features

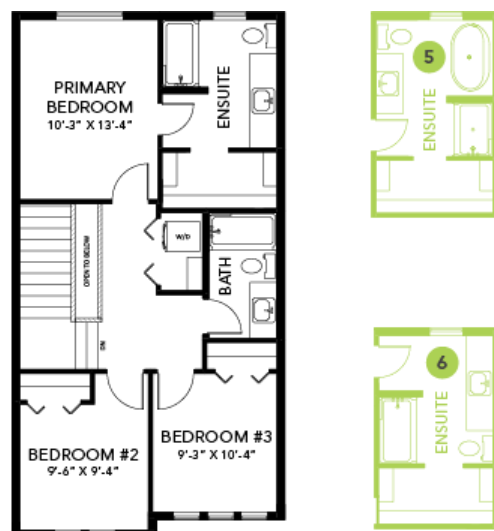
- Walking distance to Joey Moss K-9 School and close access to Joan Carr K-9 Catholic School.
- Every Bedrock Home comes complete with a modern smart home technology system (Smart Home Hub), Ecobee thermostat, video doorbell & Weiser Halo Wi-Fi Smart keyless lock with touch screen.
- This home includes a complete appliance package that includes: Stainless Steel kitchen appliances including a 28 cu. Ft. French door fridge with bottom pull out freezer and ice machine, a 5 burner range, an OTR microwave and a built-in dishwasher
- Separate side entrance and 9'4" foundation height perfect for future rental suite.
- The open concept kitchen features 41" upper cabinets to the ceiling, a large 6' island with eating bar and huge 8' pantry for extra storage.
- Paint grade railing with straight metal spindles on the stairs up to the second floor.
- 50" Linear Ortech LED electric fireplace complete with media conduit and power above to mount a TV with no wires visible.
- Second floor laundry and linen closet for ease and convenience.
- Primary bedroom features a huge walk-in closet and ensuite with dual sinks and a walk-in shower.
- Energy efficient features include triple pane, Low-E, argon gas filled, Energy Star rated windows, heat recovery ventilator, 96.5% efficient and direct vented furnace, 80gal hot water tank and Bedrock's 'Hotbox' system.
- Soft close cabinet doors and drawers throughout, and 41" upper cabinets in the kitchen.
- Quartz counter tops with under mount sinks in kitchen and baths.
- Luxury Vinyl Plank flooring throughout the main floor, all bathrooms, and the laundry room.

Floor Plans

MAIN FLOOR



SECOND FLOOR



LEGAL BASEMENT SUITE

