

Athena P at 3459 Kulay Green SW

Get Cash Back

BED	BATH	SQ FT	HOME STYLE	GARAGE TYPE
4	3	1660	LANED HOME	REAR DETACHED



BLOCK: 20

STAGE: 44

LOT: 28

JOB: KWK-0-035396

COMMUNITY



SHOWHOME
ADDRESS

Single Family
Home
3411 Kulay Green
SW

SHOWHOME
HOURS

Monday - Thursday
from 3 - 8PM
Weekend and
Holidays
from 12 - 5PM

CONTACT

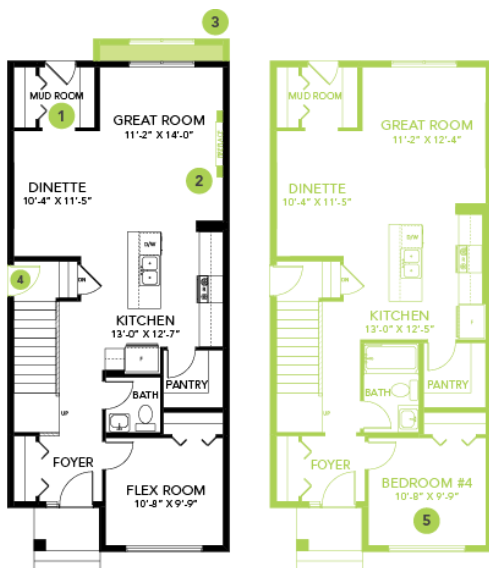
Craig Watson
587-521-6580

Model Features

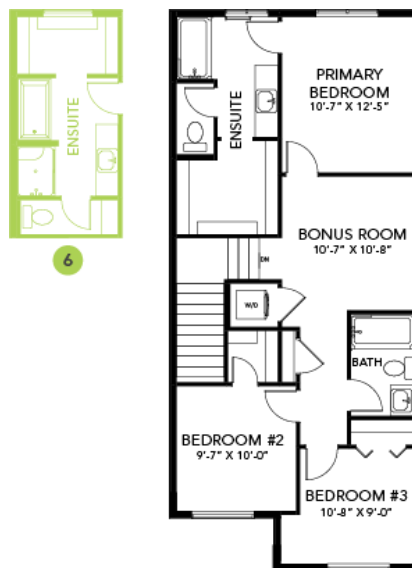
- Walking distance to Joey Moss K-9 School and Close access to Joan Carr K-9 Catholic School.
- Every Bedrock Home comes complete with a smart home technology system that includes: Ecobee thermostat, video doorbell & Weiser Halo Wi-Fi Smart keyless lock with touch screen and a Smart Home Hub. (Built in Brilliant optional).
- Separate side entrance and 9'4" foundation height perfect for future rental suite.
- This home includes a complete appliance package that includes Stainless Steel kitchen appliances including a 28 cu. Ft. French door fridge with bottom pull out freezer and ice machine, a 5 burner range, an OTR microwave and a built-in dishwasher.
- The Laundry is high efficiency front load washer and dryer in white.
- Main floor 4th bedroom and 3rd full bathroom with walk-in tiled shower added for a total of 4 beds and 3 full baths.
- Pie-shaped lot.
- 50" Linear Ortech LED electric fireplace.
- Quartz throughout the house.
- Luxury Vinyl Plank flooring throughout the main floor and all "wet areas".
- Second floor laundry and linen closet for ease and convenience.
- Triple Pain, low-e argon filled Energy Star rated windows.
- 4-piece ensuite with dual sinks and 5' fiberglass shower.

Floor Plans

MAIN FLOOR



SECOND FLOOR



LEGAL BASEMENT SUITE

