

# Priya K at 3466 Kulay Green SW

BED	BATH	SQ FT	HOME STYLE
3+	2.5+	2218	FRONT ATTACHED GARAGE HOME

GARAGE TYPE  
DOUBLE ATTACHED



QUICK POSSESSION

BLOCK: 23

STAGE: 44

LOT: 18

JOB: KWK-0-035401

COMMUNITY



SHOWHOME ADDRESS

Single Family Home  
3411 Kulay Green SW

SHOWHOME HOURS

Monday - Thursday  
from 3 - 8PM  
Weekend and  
Holidays  
from 12 - 5PM

CONTACT

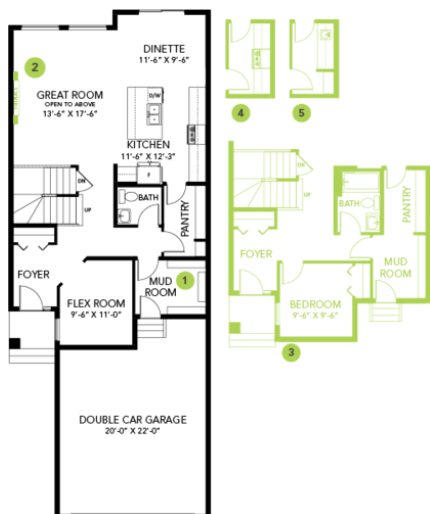
Craig Watson  
587-521-6580

# Model Features

- Walking distance to Joey Moss K-9 School and close access to Joan Carr K-9 Catholic School.
- Every Bedrock Home comes complete with a modern smart home technology system (Smart Home Hub), Ecobee thermostat, video doorbell & Weiser Halo Wi-Fi Smart keyless lock with touch screen.
- Home offers open to below concept in great room.
- This Bedrock homes include a complete appliance package that includes: Stainless Steel kitchen appliances including a 32 cu. Ft. French door fridge with bottom pull out freezer and ice machine, a 5 burner range, a 30" Chimney Hoodfan and a built-in dishwasher.
- Paint grade railing with straight metal spindles on the stairs up to the 2nd floor.
- 50" Linear LED electric fireplace complete with media conduit and power above to mount a TV with no wires visible.
- Main floor flex room.
- 2nd floor laundry and linen closet for ease and convenience.
- Master bedroom features a huge walk-in closet and ensuite bath with dual sinks and a walk-in shower and soaker tub.
- Energy efficient features include double pane, Low-E, argon gas filled, Energy Star rated windows, heat recovery ventilator, 96.5% efficient and direct vented furnace, 80gal hot water tank and Bedrock's "Hotbox" system.
- Soft close cabinet doors and drawers throughout and 41' upper cabinets in the kitchen.
- Quarts counter tops with under mount sinks in kitchen and baths.
- Luxury Vinyl Plank flooring throughout the main floor, all bathrooms and the laundry room.
- Stain Proof Carpeting by Mohawk - Portico Collection

## Floor Plans

MAIN FLOOR



SECOND FLOOR

