

Priya P at 3468 Kulay Green SW

BED	BATH	SQ FT	HOME STYLE
4	2.5+	2469	FRONT ATTACHED GARAGE HOME

GARAGE TYPE

DOUBLE ATTACHED



QUICK POSSESSION

BLOCK:	23	LOT:	17
STAGE:	44	JOB:	KWK-0-035400

COMMUNITY



SHOWHOME ADDRESS

Single Family Home
3411 Kulay Green SW

SHOWHOME HOURS

Monday - Thursday
from 3 - 8PM
Weekend and
Holidays
from 12 - 5PM

CONTACT

Craig Watson
587-521-6580

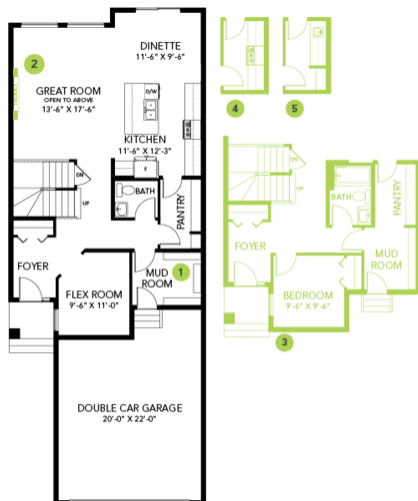
Model Features

- Walking distance to Joey Moss K-9 School and close access to Joan Carr K-9 Catholic School.
- Every Bedrock Home comes complete with a modern smart home technology system (Smart Home Hub), Ecobee thermostat, video doorbell & Weiser Halo Wi-Fi Smart keyless lock with touch screen.

- This Bedrock homes include a complete appliance package that includes: Stainless Steel kitchen appliances including a 32 cu. Ft. French door fridge with bottom pull out freezer and ice machine, a 5 burner range, a 30" Chimney Hoodfan and a built-in dishwasher.
- Galley style kitchen with a huge eating bar and tons of storage in the large pantry.
- 50" Linear LED electric fireplace complete with media conduit and power above to mount a TV with no wires visible.
- Main floor flex room.
- 2nd floor laundry and linen closet for ease and convenience.
- Primary bedroom features a huge walk-in closet and ensuite bath with dual sinks and a walk-in shower and soaker tub.
- 4th bedroom added on second floor.
- Energy efficient features include double pane, Low-E, argon gas filled, Energy Star rated windows, heat recovery ventilator, 96.5% efficient and direct vented furnace, 80gal hot water tank and Bedrock's "Hotbox" system.
- Soft close cabinet doors and drawers throughout and 41' upper cabinets in the kitchen.
- Quarts counter tops with under mount sinks in kitchen and baths.
- Luxury Vinyl Plank flooring throughout the main floor, all bathrooms and the laundry room.
- Stain Proof Carpeting by Mohawk - Portico Collection

Floor Plans

MAIN FLOOR



SECOND FLOOR

